





Geilo sweater

Our history	4
Our wool	6
Slow fashion & sustainability	9
Official team sweaters	10
Dale people	13
Sport Lifestyle	16
Women	18
Men	34
Urban	48
Women	50
Men	62
Heritage	72
Women	74
Unisex	82
Men	84
Kids	92
Accessories	96
Concepts	124
Essentials	144
Properties of wool	147
Our wool & yarn	148
Size table	150
How to measure	151
Sleeve info	152
Contact info	155
Index - numeric order	156
Index - alphabetical order	158



OUR HISTORY

An industrial adventure

Where the deep fjords of west coast Norway ends, nicely tucked away between towering mountains, you'll find the village of Dale and the cornerstone company Dale of Norway. Being located next to a once mighty river, this location is no coincidence. The combination of high mountains and a wet climate with plenty rainfall provides for waterfalls with a near unlimited access to pure energy.

Prior to the establishment of our factory in 1879, Dale was a vanishingly small place with a few, poor farms. Suddenly there was a great need for labor, and a boomtown quickly sprung up. Where there once were only a few sheep and a dilapidated barn, a modern, buzzing town emerged.

Through history there has been a near symbiotic relationship between the locals and the factory. Without the factory, no jobs. And without loyal workers, no factory. Thus, the people and the factory were weaved together in unbreakable bonds.

It has been quite a journey since 1879. Our factory has survived several devastating fires, two world wars, a depression, a couple of floods and several pandemics. We've had so many fires we pragmatically divide them into larger fires and smaller ones. Initially the textile industry was a high-risk business, where the high temperature drying of textile fibers, a lot of dust, oils and chemicals was a highly flammable combination. Luckily, the latest one dates all the way back to 1975.

Our factory has been in operation since 1879, but it was not until 1967 we started with machine knitting. Prior to this date, in the 50s and 60s, we engaged Norwegian housewives spread all over our country to knit the sweaters for us. It sounds like something we have dreamt up but it's completely true.

Catching up with the present, we are still designing and producing high quality garments at Dale. Being one of the very few textile companies with production in Norway, our factory is only a stones-throw from where it all started in 1879.

Whatever the future holds, we are confident it holds a place for a Norwegian brand with focus on quality, natural materials and lasting designs.

The unique properties of wool

Wool is nature's own "high-tech" fiber. No man-made fiber can match the unique qualities of wool. It has great insulating abilities, it breathes and wicks moisture away from the body, and keep you warm even when wet. It regulates temperature and is odor resistant.

Technical properties of wool summarized:

- 100% natural, sustainable fiber
- Superior insulation
- Excellent breathability
- Regulates temperature
- Warm even when wet or damp
- Absorbs and wicks moisture
- Antibacterial and odor resistant
- Can be refreshed simply by hanging in fresh air
- Elastic, and maintains its shape
- Non-static and fire-retardant

OUR
WOOL



Our wool family

Our wool family consists mainly of Norwegian wool and merino wool. Our collections are designed with different types of wool adapted to each product. Since 1879 we have fine-tuned our production techniques, making garments with superior long-lasting qualities. This is the secret behind our unique wool garments with unsurpassed quality and longevity.

Norwegian wool

Norwegian wool is renowned for its unique brilliance, strength and longevity. It holds more volume than lighter wool qualities, making it a superb insulator. Due to the sheep's natural mountain life, Norwegian wool is one of the world's most animal-friendly textile fibers. Our Norwegian wool comes from the "dalasau" (valley sheep), known for roaming freely in the vast Norwegian hillsides while grazing in natural pastures.

Garments with longer lifespan is a key factor to achieve a more sustainable lifestyle. Combined with our advanced knitting techniques, the outcome is beautiful garments which consistently retains their fit and shape. In addition, Norwegian wool is less susceptible to pilling. As a result, our sweaters and jackets made of Norwegian wool will keep their fresh look year after year, and thus are often handed down to the next generation. Norwegian wool is excellent for durable mid- and outer-layer knitwear.

Merino wool

Merino wool is a lighter and finer wool quality than other types of sheep's wool. The smaller the diameter of the fiber, the lighter and softer the garment gets. (Diameters are measured in microns – micrometer). Being soft and comfortable to the skin, merino wool is excellent for next-to-skin garments as well as mid-layer garments.

Merino wool holds great insulating properties. Merino wool garments are both soft and warm. It also holds great elasticity and shape retention.

Our merino wool comes from certified farmers in South America, New Zealand and Australia. The wool is of the highest quality and complies with strict standards for animal welfare. Naturally, our merino wool is mulesing-free.

The white gold

Almost every Norwegian west coast valley has a running river with roaring waterfalls. Where other countries were dependent on expensive and polluting coal to fuel their factories, we could take advantage of a literally perpetuum mobile: stable, cheap and perpetual hydropower. No wonder it was called “the white gold”.

For over 140 years the Bergsdal river has been a consistent and reliable source of power for our factory. And now, with increased focus on renewable energy, the white gold has gained an extra dimension, an even higher carat.



Slow fashion & sustainability

With increased focus on our environmental impact on our planet, a more – and much needed – conscious attitude towards production and consumption of textiles have erupted. The textile industry has for a long time been dominated by “fast fashion” with continuous launches of seasons and news, mainly produced in developing countries. Our breathtaking consumption of textiles have been a stark contrast to our increased concern on our footprint on Earth.

With a persistent focus on making high-quality, long lasting garments of 100% wool, our Dale of Norway collections are designed to last, design-wise and quality-wise. We are not a trend hopping brand with a collection launch for every season, focusing on short lived micro trends. We work with the longer lines. Our yearly collection launch is equally focused on the continuation of our classic bestsellers. You can say we have operated within “slow fashion” since before the expression even existed.

Our knitwear is fully fashioned as opposed to cut & sew. We knit the panels of our garments into their actual shape and size and then link them together with a linking machine. This generates very little waste fabric, only 1-2%, as opposed to cut & sew where more than 20% waste fabric is common. Not only does this substantially reduce the consumption of raw materials, but it also leads to a corresponding reduction in wool and yarn to be processed and transported. In addition, our production is continuously adjusted according to demand. Over-production and the environmental impacts implied are thus avoided.

Being among the best in class doesn't mean you can't get any better. Every day we are looking for ways to reduce our environmental impact. Step by step. Sweater by sweater. Sheep by sheep. We believe in wool.



Official Olympic and World Championships sweaters since 1956

Norwegians are not known for boosting their credentials, but we actually have to turn up the volume on this one. Did you know we have made official sweaters for the national Norwegian Cross-Country ski team for every single Winter Olympics and World Ski Championships since 1956? That is *every single – since nineteen-fifty-six?*

Norwegians are said to be born with skis on their feet. And since the 1956 Cortina d'Ampezzo Winter Olympics these skis have been accompanied by a Dale sweater. It has been a truly impressive row of legendary ski athletes carrying a Dale sweater and a medallion – or several – around their necks. No wonder our team sweaters remain popular years after the Olympic Fire has been put out and the spectators have left for home. They have become iconic collector's items.

We cannot emphasize enough how important these team sweaters have been in the process of making Dale of Norway an internationally renowned brand. There have been so many highlights. Branding-wise, the 1994 Lillehammer Winter Olympics and the 2002 Salt Lake City Winter Olympics stands out as the two most important events for us.

Even though we love ski and winter, we surely embrace the summer. For the first time since 1992 we made an official team sweater for a Summer Olympics. Our Tokyo sweater was the official team sweater for the Norwegian participants in the 2020 Tokyo Summer Olympics and Paralympics.





Cover photo from a Dale catalogue, date unknown.



Dale people

Even though ingenuity, unique products and a relentless focus on quality has been a key factor for our enduring success, we know the true heroes of our story are our employees. Some employed for 40, 50 and even 60 years, some without a single day of sick leave. At Dale we have several generations working side by side, and some of our colleagues are an impressive fifth generation Dale employee. We have always had a thriving work environment at Dale, characterized by comradery and unity.

Loyalty like this doesn't come by chance. Since the very beginning there has been a symbiotic relationship between the factory and the Dale people. Without loyal workers there can be no factory. Without the factory, there are no jobs. Thus, the factory and the community are strongly connected and equally dependent on each other.

The legend tells the story of an elderly employee impossible to retire. Despite he had his regular rounds in the factory twice a day, he was never to be seen when the letter of retirement was to be handed over. Some say he's still here, that he has become a ghost. But technically, he is still an employee, a colleague of ours. We only know him as the Spirit of Dale of Norway.



Collection 22/23



Sport
Lifestyle



Women's
Next-to-skin

Olympia Basic sweater

delivery from autumn

SPORT LIFESTYLE
next-to-skin / women

OLYMPIA BASIC SWEATER 95581

NEW



A00*
OFF WHITE / NAVY /
SMOKE



C00*
NAVY / RASPBERRY /
OFF WHITE

S - XL | Slim fit | Next-to-skin, light knit | 100% skin soft superfine merino wool | Pure 16.5 micron 1-ply | 22 gauge | 280g/m2 | J-sleeve | Quarter-zip, high neck | Machine wash using wool-cycle

OLYMPIA BASIC LEGGINGS 62121

NEW



C00*
NAVY

S - XL | Slim fit | Next-to-skin, light knit | 100% skin soft superfine merino wool | Pure 16.5 micron 1-ply | 22 gauge | 280g/m2 | Machine wash using wool-cycle

HANANIPA BASIC SWEATER 95401

NEW



B00*
RASPBERRY



C00*
NAVY

XS - XL | Slim fit | Next-to-skin, light knit | 60% skin soft extra-fine merino wool, 40% Tencel | Progress 19.5 micron 1-ply | 14 gauge | 290g (size M) | J-sleeve | Crew neck | Machine wash using wool-cycle

MORITZ BASIC SWEATER 92681



C
NAVY / WHITE /
RASPBERRY

B
RASPBERRY /
NAVY / OFF WHITE

N
DARK GREEN / OFF
WHITE / DARK CHARCOAL

K
DARK CHARCOAL /
OFF WHITE

S - XL | Slim fit | Next-to-skin, light knit | 100% skinsoft superfine merino wool | Pure 16.5 micron
1-ply | 22 gauge | 280g/m2 | J-sleeve | Quarter- zip, high neck | Machine wash using wool-cycle

SPIRIT BASIC SWEATER 94801



C
NAVY /
OFF WHITE

S - XL | Slim fit | Next-to-skin, light knit | 100% skin soft superfine merino wool | Pure 16.5 micron
1-ply | 22 gauge | 280g/m2 | J-sleeve | Quarter- zip, high neck | Machine wash using wool-cycle

SPIRIT LEGGINGS 62011



C
NAVY /
OFF WHITE

S - XL | Slim fit | Next-to-skin, light knit | 100% skin soft superfine merino wool | Pure 16.5 micron
1-ply | 22 gauge | 280g/m2 | Machine wash using wool-cycle

CORTINA BASIC SWEATER 93521



B
RASPBERRY /
OFF WHITE

C
NAVY /
OFF WHITE

N
DARK GREEN /
OFF WHITE

T
DARK CHARCOAL /
OFF WHITE

XS - XL | Slim fit | Next-to-skin, light knit | 100% skinsoft superfine merino | Pure 16.5 micron
1-ply | 22 gauge | 280g/m2 | J-sleeve | Quarter- zip, high neck | Machine wash using wool-cycle

STARGAZE BASIC SWEATER 95001



C
NAVY /
OFF WHITE

S - XL | Slim fit | Next-to-skin, light knit | 100% skin soft superfine merino wool | Pure 16.5 micron
1-ply | 22 gauge | 280g/m2 | J-sleeve | Quarter- zip, high neck | Machine wash using wool-cycle

STARGAZE LEGGINGS 62081



C
NAVY /
OFF WHITE

S - XL | Slim fit | Next-to-skin, light knit | 100% skin soft superfine merino wool | Pure 16.5 micron
1-ply | 22 gauge | 280g/m2 | Machine wash using wool-cycle



Women's
Mid Layer

Isfrid sweater

delivery from autumn

SPORT LIFESTYLE
mid layer / women

ISFRID SWEATER 94521

NEW



B00*
RASPBERRY /
WHITE

C00*
NAVY /
WHITE

S - XL | Regular fit | Mid layer, light knit | 100% skin soft extra-fine merino wool | Harmony 19.5 micron
1-ply | 14 gauge | 330g (size M) | Raglan sleeve | High neck | Machine wash using wool-cycle

MOUNT BLÅTIND SWEATER 95101

NEW



A00*
WHITE / BLACK /
ULTRAMARINE

B00*
RASPBERRY / WHITE /
BLACK

F00*
BLACK / WHITE /
RASPBERRY

S - XL | Regular fit | Mid layer, light knit | 100% skin soft extra-fine merino wool | Harmony 19.5 micron
1-ply | 14 gauge | 450g (size M) | J-sleeve | Quarter-zip, high neck | Machine wash using wool-cycle

MOUNT ROSSNOS SWEATER 95141

NEW



B00*
RASPBERRY / WHITE /
ULTRAMARINE

F00*
BLACK /
WHITE

S - XL | Loose fit | Mid layer, light knit | 100% skin soft extra-fine merino wool | Harmony 19.5 micron
1-ply | 14 gauge | 315g (size M) | T-sleeve | High neck | Machine wash using wool-cycle

OLYMPIA SWEATER 95181

NEW



A00*
OFF WHITE / NAVY /
SMOKE

B00*
RASPBERRY / NAVY /
OFF WHITE

C00*
NAVY / RASPERRY /
OFF WHITE



S - XL | Regular fit | Mid layer, light knit | 100% skin soft merino wool | Zefir 20.5 micron
1-ply | 14 gauge | 425g (size M) | J-sleeve | Medium high neck | Machine wash using wool-cycle

OLYMPIA JACKET 85181

NEW



C00*
NAVY / RASPERRY /
OFF WHITE



S - XL | Regular fit | Mid layer, light knit | 100% skin soft merino wool | Zefir 20.5 micron
1-ply | 14 gauge | 505g (size M) | J-sleeve | Two-way zipper, high neck | Machine wash using wool-cycle

MOUNT OLYMPUS ZIP HOODIE 83921

NEW



F00*
BLACK

S - XL | Regular fit | Mid layer, light knit | 100% skin soft extra-fine merino wool | Leonora 19.5 micron
1-ply | 14 gauge | 335g (size M) | J-sleeve | Two-way zipper | Drawstring hood | Machine wash using wool-cycle

DALESTØLEN SWEATER 95601

NEW



A00*
OFF WHITE /
NAVY

S - XL | Regular fit | Mid layer, light knit | 100% skin soft merino wool | Zefir 20.5 micron
1-ply | 14 gauge | 450g (size M) | J-sleeve | Quarter-zip, high neck | Machine wash using wool-cycle

DYSTINGEN SWEATER 95621

NEW



B00*
RASPBERRY /
OFF WHITE / NAVY

F00*
BLACK / OFF WHITE /
RASPBERRY

S - XL | Regular fit | Mid layer, light knit | 100% skin soft merino wool | Zefir 20.5 micron
1-ply | 14 gauge | 445g (size M) | J-sleeve | Quarter-zip, high neck | Machine wash using wool-cycle

MOUNT RED SWEATER 94641



B
RASPBERRY /
WHITE

F
BLACK /
WHITE

XS - XL | Regular fit | Mid layer, light knit | 100% skin soft extra-fine merino wool | Harmony 19.5 micron
1-ply | 14 gauge | 490g (size M) | J-sleeve | High neck | Machine wash using wool-cycle

MOUNT ASHCROFT SWEATER 94621



A
WHITE / NAVY /
RASPBERRY

F
BLACK / WHITE /
SMOKE

XS - XL | Regular fit | Mid layer, light knit | 100% skin soft extra-fine merino wool | Harmony 19.5 micron
1-ply | 14 gauge | 450g (size M) | J-sleeve | Medium high neck | Machine wash using wool-cycle

FIRDA SWEATER 94541



D00*
BLUE SHADOW /
OFF WHITE / MUSTARD

B
RASPBERRY /
OFF WHITE / NAVY

F
BLACK / OFF WHITE /
RASPBERRY

XS - XL | Regular fit | Mid layer, light knit | 100% skin soft merino wool | Zefir 20.5 micron
1-ply | 14 gauge | 460g (size M) | T-sleeve | High neck | Machine wash using wool-cycle

GEILO SWEATER 82311



A
OFF WHITE /
BLACK

C
NAVY / OFF WHITE /
RASPBERRY

O00*
MUSTARD /
OFF WHITE

F
BLACK /
OFF WHITE

XS - XL | Regular fit | Mid layer, light knit | 100% skin soft merino wool | Zefir 20.5 micron
1-ply | 14 gauge | 490g (size M) | Raglan sleeve | Quarter-zip, medium high neck | Machine wash using wool-cycle

GEILO DRESS 65100



N
DARK GREEN /
OFF WHITE

F
BLACK /
OFF WHITE

XS - XL | Regular fit | Mid layer, light knit | 100% skin soft merino wool | Zefir 20.5 micron
1-ply | 14 gauge | 560g (size M) | Raglan sleeve | Quarter-zip, medium high neck | Long sleeves with thumb holes | Machine wash using wool-cycle

MORITZ SWEATER 91461



D00*
SAND / OFF WHITE /
BLUE SHADOW

P
NAVY / OFF WHITE /
BEIGE

R
NAVY / OFF WHITE /
ULTRAMARINE

N
DARK GREEN / OFF
WHITE / LIGHT CHARCOAL

K
BLACK /
OFF WHITE

S - XL | Regular fit | Mid layer, regular knit | 100% skin soft merino wool | Zefir 20.5 micron
2-ply | 10 gauge | 560g (size M) | J-sleeve | Quarter-zip, medium high neck | Machine wash using wool-cycle

OL SPIRIT SWEATER 94761



C
NAVY / OFF WHITE /
RASPBERRY

XS - XL | Regular fit | Mid layer, light knit | 100% skin soft merino wool | Zefir 20.5 micron
1-ply | 14 gauge | 480g (size M) | J-sleeve | Quarter-zip, low neck | Machine wash using wool-cycle

SPIRIT JACKET 83821



C
NAVY / OFF WHITE /
RASPBERRY

XS - XL | Regular fit | Mid layer, light knit | 100% skin soft merino wool | Zefir 20.5 micron
1-ply | 14 gauge | 472g (size M) | Raglan sleeve | Two way zipper, medium high neck | Machine wash using wool-cycle

HOVEN SWEATER 94721



A
OFF WHITE

P00*
SAND

Q00*
AUBERGINE

S - XL | Regular fit | Mid layer, regular knit | 100% lightweight wool | Seagull 27 micron | Neckline in skin soft merino wool
3-ply | 7 gauge | 810g (size M) | J-sleeve | High neck | Machine wash using wool-cycle



OL Spirit sweater



Women's
Outer layer

Veøy pile fleece jacket

delivery from autumn

SPORT LIFESTYLE
outer layer / women

VEØY PILE FLEECE JACKET 55041

NEW



A00*
OFF WHITE

C00*
NAVY

XS - XL | Regular fit | Outer layer | 40% merino wool, 40% polyester, 20% acrylic
600g (size M) | Raglan sleeve | Two-way zipper, zippered front pockets | Machine wash using wool-cycle

VEØY PILE FLEECE VEST 55061

NEW



A00*
OFF WHITE

C00*
NAVY

XS - XL | Regular fit | Outer layer | 40% merino wool, 40% polyester, 20% acrylic
380g (size M) | Two-way zipper, zippered front pockets | Machine wash using wool-cycle

UTVÆR WINDBREAKER VEST 55021

NEW



C00*
NAVY

XS - XL | Regular fit | Outer layer | Main fabric front: 100% brushed polyester. Main fabric back: 50% merino wool, 50% acrylic | Fill: Thinsulate
540g (size M) | Two-way zipper, zippered front pockets | Machine wash using wool-cycle

VESKRE WEATHERPROOF SWEATER 94841



B
RASPBERRY /
OFF WHITE

C
NAVY /
OFF WHITE



S - XL | Regular fit | Outer layer, heavy knit | 100% long-lasting Norwegian wool | Plover nano 33.5 micron | Windproof lining
4-ply | 5 gauge | 1110g (size M) | T-sleeve | Quarter-zip, high neck | Zippered front pockets | Hand gaiters with thumb holes | Hand wash



Veskre WP sweater



Mount Red sweater

Men's
Next-to-skin



Cortina Basic sweater

delivery from autumn

SPORT LIFESTYLE
next-to-skin / men

OLYMPIA BASIC SWEATER 95591

NEW



A00*
OFF WHITE / NAVY /
RASPBERRY

C00*
NAVY / OFF WHITE /
RASPBERRY

S - XXL | Slim fit | Next-to-skin, light knit | 100% skin soft superfine merino wool | Pure 16.5 micron
1-ply | 22 gauge | 280g/m2 | J-sleeve | Quarter-zip, medium high neck | Machine wash using wool-cycle

OLYMPIA PANTS 62131

NEW



C00*
NAVY

S - XXL | Regular fit | Next-to-skin, light knit | 100% skin soft superfine merino wool | Pure 16.5 micron
1-ply | 22 gauge | 280g/m2 | Machine wash using wool-cycle

HANANIPA BASIC SWEATER 95411

NEW



C00*
NAVY

S - XXL | Slim fit | Next-to-skin, light knit | 60% skin soft extra-fine merino wool, 40% Tencel | Progress 19.5 micron
1-ply | 14 gauge | 345g (size L) | J-sleeve | Crew neck | Machine wash using wool-cycle

CORTINA BASIC SWEATER 93531



N
DARK GREEN /
OFF WHITE

C
NAVY /
OFF WHITE

T
DARK CHARCOAL /
OFF WHITE

S - XXL | Slim fit | Next-to-skin, light knit | 100% skin soft superfine merino wool | Pure 16.5 micron
1-ply | 22 gauge | 280g/m2 | J-sleeve | Quarter-zip, high neck | Machine wash using wool-cycle

SPIRIT BASIC SWEATER 94811



C
NAVY /
OFF WHITE

S - XXL | Slim fit | Next-to-skin, light knit | 100% skin soft superfine merino wool | Pure 16.5 micron
1-ply | 22 gauge | 280g/m2 | J-sleeve | Quarter-zip, high neck | Machine wash using wool-cycle

SPIRIT PANTS 62051



C
NAVY /
OFF WHITE

S - XXL | Slim fit | Next-to-skin, light knit | 100% skin soft superfine merino wool | Pure 16.5 micron
1-ply | 22 gauge | 280g/m2 | Machine wash using wool-cycle

MORITZ BASIC SWEATER 92691



B
RASPBERRY / NAVY /
OFF WHITE

N
DARK GREEN / OFF
WHITE / DARK CHARCOAL

C
NAVY / WHITE /
RASPBERRY

K
DARK CHARCOAL /
OFF WHITE

S - XXL | Slim fit | Next-to-skin, light knit | 100% skin soft superfine merino wool | Pure 16.5 micron
1-ply | 22 gauge | 280g/m2 | J-sleeve | Quarter-zip, high neck | Machine wash using wool-cycle

HISTORY BASIC SWEATER 94831



C
NAVY /
OFF WHITE

S - XXL | Slim fit | Next-to-skin, light knit | 100% skin soft superfine merino wool | Pure 16.5 micron
1-ply | 22 gauge | 280g/m2 | J-sleeve | Quarter-zip, high neck | Machine wash using wool-cycle

HISTORY PANTS 62071



C
NAVY /
OFF WHITE

S - XXL | Regular fit | Next-to-skin, light knit | 100% skin soft superfine merino wool | Pure 16.5 micron
1-ply | 22 gauge | 280g/m2 | Machine wash using wool-cycle



Men's
Mid layer

Olympia sweater & Utvær vest

delivery from autumn

SPORT LIFESTYLE
mid layer / men

OLYMPIA SWEATER 95191

NEW



A00*
OFF WHITE / NAVY /
SMOKE

C00*
NAVY / OFF WHITE /
RASPBERRY

S - XXL | Regular fit | Mid layer, light knit | 100% skin soft merino wool | Zefir 20.5 micron
1-ply | 14 gauge | 560g (size L) | J-sleeve | Medium high neck | Machine wash using wool-cycle

OLYMPIA JACKET 85191

NEW



C00*
NAVY / OFF WHITE /
RASPBERRY

S - XXL | Regular fit | Mid layer, light knit | 100% skin soft merino wool | Zefir 20.5 micron
1-ply | 14 gauge | 600g (size L) | J-sleeve | Full zip, high neck | Machine wash using wool-cycle

MOUNT OLYMPUS ZIP HOODIE 83931

NEW



F00*
BLACK

S - XXL | Regular fit | Mid layer, light knit | 100% skin soft extra-fine merino wool | Leonora 19.5 micron
1-ply | 14 gauge | 370g (size L) | J-sleeve | Full zip | Drawstring hood | Machine wash using wool-cycle

DALESTØLEN SWEATER 95611

NEW



A00*
OFF WHITE /
NAVY

C00*
NAVY /
OFF WHITE

S - XXL | Regular fit | Mid layer, light knit | 100% skin soft merino wool | Zefir 20.5 micron
1-ply | 14 gauge | 580g (size L) | J-sleeve | Quarter-zip, high neck | Machine wash using wool-cycle

MOUNT BLÅTIND SWEATER 95111

NEW



C00*
NAVY / WHITE /
ULTRAMARINE

F00*
BLACK / WHITE /
RASPBERRY

S - XXL | Regular fit | Mid layer, light knit | 100% skin soft extra-fine merino wool | Harmony 19.5 micron
1-ply | 14 gauge | 600g (size L) | J-sleeve | Quarter-zip, high neck | Machine wash using wool-cycle

MOUNT ASHCROFT SWEATER 94631



C
NAVY / WHITE /
ULTRAMARINE

F
BLACK / WHITE /
SMOKE

S - XXL | Regular fit | Mid layer, light knit | 100% skinsoft extra-fine merino wool | Harmony 19.5 micron
1-ply | 14 gauge | 660g (size L) | J-sleeve | High neck | Machine wash using wool-cycle

GEILO SWEATER 95041



O00*
MUSTARD /
OFF WHITE

N
DARK GREEN /
OFF WHITE

F
BLACK /
OFF WHITE

E
DARK CHARCOAL /
SMOKE

S - XXL | Regular fit | Mid layer, light knit | 100% skin soft merino wool | Zefir 20.5 micron
1-ply | 14 gauge | 610g (size L) | Raglan sleeve | Quarter-zip, medium high neck | Machine wash using wool-cycle

LAHTI SWEATER 95031



H
ULTRAMARINE /
OFF WHITE / NAVY

C
NAVY / OFF WHITE /
RASPBERRY

F
BLACK /
SMOKE / OFF WHITE

S - XXL | Regular fit | Mid layer, regular knit | 100% lightweight wool | Seagull 27 micron | Neckline in skin soft merino wool
2-ply | 7 gauge | 710g (size L) | J-sleeve | Quarter-zip, medium high neck | Machine wash using wool-cycle

MORITZ SWEATER 91391



D00*
BLUE SHADOW /
OFF WHITE / MUSTARD

H
ULTRAMARINE /
OFF WHITE / NAVY

N
DARK GREEN / SMOKE /
DARK CHARCOAL

E
DARK CHARCOAL /
BLACK / OFF WHITE

K
BLACK / OFF WHITE /
DARK CHARCOAL

S - XXXL | Regular fit | Mid layer, regular knit | 100% skin soft merino wool | Zefir 20.5 micron
2-ply | 10 gauge | 790g (size L) | J-sleeve | Quarter-zip, medium high neck | Machine wash using wool-cycle

OL SPIRIT SWEATER 94771



C
NAVY / OFF WHITE /
RASPBERRY

S - XXL | Regular fit | Mid layer, light knit | 100% skin soft merino wool | Zefir 20.5 micron
1-ply | 14 gauge | 630g (size L) | J-sleeve | Quarter-zip, low neck | Machine wash using wool-cycle

SPIRIT JACKET 83831



C
NAVY / OFF WHITE /
RASPBERRY

S - XXL | Regular fit | Mid layer, light knit | 100% skin soft merino wool | Zefir 20.5 micron
1-ply | 14 gauge | 615g (size L) | Raglan sleeve | Full zip, medium high neck | Machine wash using wool-cycle

HISTORY UNISEX SWEATER 94931



C
NAVY /
OFF WHITE

XS - XXL | Regular fit | Mid layer, regular knit | 100% fine Norwegian wool | Heron 30.5 micron | Neckline in skin soft merino wool
3-ply | 10 gauge | 720g (size L) | T-sleeve | Quarter-zip, medium high neck | Machine wash using wool-cycle

HOVEN SWEATER 94731



P00*
SAND

U00*
COPPER

C
NAVY

S - XXL | Regular fit | Mid layer, regular knit | 100% lightweight wool | Seagull 27 micron | Neckline in skin soft merino wool
3-ply | 7 gauge | 1020g (size L) | J-sleeve | Quarter-zip, high neck | Machine wash using wool-cycle





Men's
Outer layer

Veøy pile fleece vest

delivery from autumn

SPORT LIFESTYLE
outer layer / men

VEØY PILE FLEECE JACKET 55051

NEW



A00*
OFF WHITE

C00*
NAVY

S - XXL | Regular fit | Outer layer | 40% merino wool, 40% polyester, 20% acrylic
635g (size L) | Raglan sleeve | Two-way zipper, zippered front pockets | Machine wash using wool-cycle

VEØY PILE FLEECE VEST 55071

NEW



A00*
OFF WHITE

C00*
NAVY

S - XXL | Regular fit | Outer layer | 40% merino wool, 40% polyester, 20% acrylic
400g (size L) | Two-way zipper, zippered front pockets | Machine wash using wool-cycle

UTVÆR WINDBREAKER VEST 55031

NEW



C00*
NAVY

S - XXL | Regular fit | Outer layer | Main fabric front: 100% brushed polyester. Main fabric back: 50% merino wool, 50% acrylic | Fill: Thinsulate
560g (size L) | Two-way zipper, zippered front pockets | Machine wash using wool-cycle

VAIL WEATHERPROOF HOODIE 95251

NEW



A00*
OFF WHITE / NAVY /
BLUE SHADOW

O00*
MUSTARD / SAND /
BLUE SHADOW

C00*
NAVY / INDIGO /
BLUE SHADOW



S - XXL | Loose fit | Outer layer, heavy knit | 100% long-lasting Norwegian wool | Plover nano 33.5 micron | Windproof lining
3-ply | 5 gauge | 1430g (size L) | T-sleeve | Drawstring hood | Quarter-zip, two zippered front pockets | Hand wash

VESKRE WEATHERPROOF SWEATER 94851



E
SMOKE /
OFF WHITE

C
NAVY /
OFF WHITE



S - XXL | Regular fit | Outer layer, heavy knit | 100% long-lasting Norwegian wool | Plover nano 33.5 micron | Windproof lining
4-ply | 5 gauge | 1350g (size L) | T-sleeve | Half-zip | Zippered front pockets | Hand gaiters with thumb holes | Hand wash



Vail WP hoodie



Urban



Aspøy sweater



Women's
Mid Layer

Karmøy sweater

ELIS SWEATER 95081

NEW



A00*
OFF WHITE / BLACK / METAL
D00*
BLUE SHADOW / INDIGO / OFF WHITE
F00*
BLACK / OFF WHITE / SMOKE

S - XL | Loose fit | Mid layer, regular knit | 100% lightweight wool | Seagull 27 micron | Neckline in skin soft merino wool 2-ply | 7 gauge | 605g (size M) | J-sleeve | Half-zip, high neck | Machine wash using wool-cycle

ASPØY SWEATER 95361

NEW



A00*
OFF WHITE / RASPBERRY / NAVY
P00*
SAND / COPPER / MOUNTAINSTONE

S - XL | Loose fit | Mid layer, regular knit | 100% lightweight wool | Seagull 27 micron | Neckline in skin soft merino wool 2-ply | 7 gauge | 650g (size M) | T-sleeve | High neck | Machine wash using wool-cycle

KARMØY SWEATER 95341

NEW



A00*
OFF WHITE / MOUNTAINSTONE
F00*
BLACK / OFF WHITE

S - XL | Loose fit | Mid layer, regular knit | 100% lightweight wool | Seagull 27 micron | Neckline in skin soft merino wool 2-ply | 7 gauge | 570g (size M) | Raglan sleeve | Crew neck | Machine wash using wool-cycle

VALLØY SWEATER 95261

NEW



A01*
OFF WHITE / MOUNTAINSTONE
A00*
OFF WHITE / BLACK
F00*
BLACK / OFF WHITE

S - XL | Loose fit | Mid layer, heavy knit | 100% lightweight wool | Seagull 27 micron | Neckline in skin soft merino wool 3-ply | 5 gauge | 765g (size M) | T-sleeve | High neck | Machine wash using wool-cycle

SVANØY SWEATER 95461

NEW



A00*
OFF WHITE / METAL / DARK GREEN
C00*
NAVY / OFF WHITE / BLUE SHADOW

S - XL | Regular fit | Mid layer, heavy knit | 100% lightweight wool | Seagull 27 micron | Neckline in skin soft merino wool 3-ply | 5 gauge | 670g (size M) | J-sleeve | Crew neck | Machine wash using wool-cycle

SVANØY DRESS 65120

NEW



A00*
OFF WHITE / METAL / DARK GREEN
C00*
NAVY / OFF WHITE / BLUE SHADOW

S - XL | Regular fit | Mid layer, heavy knit | 100% lightweight wool | Seagull 27 micron | Neckline in skin soft merino wool 3-ply | 5 gauge | 890g (size M) | J-sleeve | Crew neck | Machine wash using wool-cycle



Kvaløy sweater

delivery from autumn

URBAN
mid layer / women

VÅGSØY SWEATER 95381

NEW



A00*
OFF WHITE /
BLUE SHADOW

F00*
BLACK /
OFF WHITE

S - XL | Regular fit | Mid layer, heavy knit | 100% lightweight wool | Seagull 27 micron | Neckline in skin soft merino wool
3-ply | 5 gauge | 565g (size M) | Raglan sleeve | Crew neck | Machine wash using wool-cycle

KVALØY SWEATER 95441

NEW



A00*
OFF WHITE

F00*
BLACK

S - XL | Loose fit | Mid layer, heavy knit | 100% exclusive air-spun merino wool | Husky 19.5 micron
1-ply | 5 gauge | 860g (size M) | T-sleeve | High neck | Machine wash using wool-cycle

SØRØY SHACKET 75021

NEW



F00*
BLACK

S - XL | Loose fit | Mid layer, light knit | 100% fine Norwegian wool | Heron 30.5 micron
2-ply | 14 gauge | 560g (size M) | T-sleeve | Button closure | Machine wash using wool-cycle

VILJA SWEATER 94981



D00* BLUE SHADOW / OFF WHITE / MUSTARD
H ULTRAMARINE / OFF WHITE / RASPBERRY
F BLACK / OFF WHITE / RED ROSE

XS - XL | Regular fit | Mid layer, heavy knit | 100% lightweight wool | Seagull 27 micron | Neckline in skin soft merino wool
3-ply | 5 gauge | 740g (size M) | J-sleeve | Crew neck | Machine wash using wool-cycle

VILJA JACKET 83881



O00* MUSTARD / OFF WHITE / SAND
H ULTRAMARINE / OFF WHITE / RASPBERRY
F BLACK / OFF WHITE / RED ROSE

XS - XL | Regular fit | Mid layer, heavy knit | 100% lightweight wool | Seagull 27 micron | Neckline in skin soft merino wool
3-ply | 5 gauge | 800g (size M) | J-sleeve | Crew neck | Norwegian-made pewter buttons | Machine wash using wool-cycle

BJORØY SWEATER 94401



O00* MUSTARD / OFF WHITE / BLUE SHADOW
Q00* AUBERGINE / SAND / MOUNTAINSTONE
F BLACK / OFF WHITE / RASPBERRY

XS - XL | Loose fit | Mid layer, regular knit | 100% fine Norwegian wool | Heron 30.5 micron | Neckline in skin soft merino wool
3-ply | 10 gauge | 500g (size M) | T-sleeve | Low neck | Machine wash using wool-cycle

FALUN HERON SWEATER 94921



A OFF WHITE / BLACK
H ULTRAMARINE / OFF WHITE
F BLACK / OFF WHITE

XS - XL | Loose fit | Mid layer, regular knit | 100% fine Norwegian wool | Heron 30.5 micron | Neckline in skin soft merino wool
3-ply | 10 gauge | 500g (size M) | T-sleeve | High neck | Machine wash using wool-cycle

FALUN SWEATER 94041



A OFF WHITE / BLACK
C NAVY / OFF WHITE
F BLACK / OFF WHITE

XS - XXL | Loose fit | Mid layer, heavy knit | Soft 50/50 alpaca and wool blend | Kyoto 22.5 micron
3-ply | 5 gauge | 920g (size M) | T-sleeve | High neck | Hand wash

MYKING SWEATER 93011



C LIGHT CHARCOAL / NAVY
F BLACK / OFF WHITE

S - XL | Regular fit | Mid layer, heavy knit | 100% exclusive air-spun merino wool | Husky 19.5 micron
1-ply | 2.5 gauge | 750g (size M) | French shoulders | Quarter-zip, high neck | Hand wash



Women's
Outer layer

Firda quilted jacket

delivery from autumn

URBAN
outer layer / women

VILJA WEATHERPROOF HOODIE 95221

NEW



A00*
OFF WHITE / BLACK /
RED ROSE

P00*
SAND / AUBERGINE /
BERRY CREAM

C00*
NAVY / OFF WHITE /
SMOKE



S - XL | Loose fit | Outer layer, heavy knit | 100% long-lasting Norwegian wool | Plover nano 33.5 micron | Windproof lining
3-ply | 5 gauge | 1345g (size M) | T-sleeve | Quarter-zip, zippered front pockets | Drawstring hood | Hand wash

FIRDA QUILTED JACKET 85301

NEW



B00*
RASPBERRY /
OFF WHITE

F00*
BLACK /
OFF WHITE



XS - L | Regular fit | Outer layer | 100% skin soft merino wool | Zefir Nano 20.5 micron | 2-ply | 10 gauge | 1615g (size M) | J-sleeve | Two-way zipper, zippered front pockets | Drawstring hood | Insulation: Lavalan virgin wool fibre fill. Lining: skin soft merino wool 16.5 micron | Hand wash

SEDJE DOWN JACKET 55121

NEW



A00*
WHITE

F00*
BLACK

XS - XL | Regular fit | Outer layer | Main fabric & lining: 100% nylon | Insulation: Recycled down 90/10
1000g (size M) | J-sleeve | Full length two-way zipper, front placket with button closure, zippered front pockets | Dry clean only

LINDØY DOWN JACKET 55101

NEW



A00*
WHITE

F00*
BLACK

XS - XL | Regular fit | Outer layer | Insulation: Recycled Down 90/10 | Main fabric & lining: 55% polyurethane, 45% polyester
Neck, cuffs, hem in pile fleece merino | 1410g (size M) | J-sleeve | Two-way zipper, front placket with button closure, zippered front pockets | Dry clean only

STORD DOWN PARKA 55081

NEW



E00*
GREY MELANGE

XS - XL | Regular fit | Outer layer | Main fabric: 100% brushed polyester | Insulation: Recycled Down 90/10 | Lining: 100% polyester
Synthetic fur | 760g (size M) | J-sleeve | Full length two-way zipper, front placket with button closure, zippered front pockets | Dry clean only



Firda quilted jacket & Lindøy down jacket



Men's
Mid Layer

Aspøy sweater

delivery from autumn

URBAN
mid layer / men

ELIS SWEATER 95091

NEW



A00*
OFF WHITE /
BLACK / METAL

C00*
NAVY /
OFF WHITE / SMOKE

S - XXL | Regular fit | Mid layer, regular knit | 100% lightweight wool | Seagull 27 micron | Neckline in skin soft merino wool
2-ply | 7 gauge | 675g (size L) | J-sleeve | Crew neck | Machine wash using wool-cycle

ASPØY SWEATER 95471

NEW



A00*
OFF WHITE / NAVY /
RASPBERRY

C00*
NAVY / OFF WHITE /
MUSTARD

S - XXL | Loose fit | Mid layer, regular knit | 100% lightweight wool | Seagull 27 micron | Neckline in skin soft merino wool
2-ply | 7 gauge | 725g (size L) | T-sleeve | Quarter-zip, medium high neck | Machine wash using wool-cycle

VALLØY SWEATER 95271

NEW



A00*
OFF WHITE /
BLACK

N00*
DARK GREEN /
OFF WHITE

C00*
NAVY /
OFF WHITE

S - XXL | Loose fit | Mid layer, heavy knit | 100% lightweight wool | Seagull 27 micron | Neckline in skin soft merino wool
3-ply | 5 gauge | 790g (size L) | T-sleeve | Crew neck | Machine wash using wool-cycle

KVALØY SWEATER 95451

NEW



A00*
OFF WHITE

F00*
BLACK

S - XXL | Loose fit | Mid layer, heavy knit | 100% exclusive air-spun merino wool | Husky 19.5 micron | Neckline in skin soft merino wool
1-ply | 5 gauge | 1020g (size L) | T-sleeve | Crew neck | Machine wash using wool-cycle

MÅLØY SWEATER 95511

NEW



A00*
OFF WHITE

C00*
DUSTY NAVY

S - XXL | Regular fit | Mid layer, heavy knit | 100% exclusive air-spun merino wool | Husky 19.5 micron
1-ply | 5 gauge | 920g (size L) | J-sleeve | Crew neck | Machine wash using wool-cycle

BJØRNØY SWEATER 95491

NEW



A00*
OFF WHITE /
BLUE SHADOW / NAVY

O00*
MUSTARD /
OFF WHITE

C00*
NAVY /
BLUE SHADOW

S - XXL | Regular fit | Mid layer, regular knit | 100% lightweight wool | Seagull 27 micron | Neckline in skin soft merino wool
2-ply | 7 gauge | 700g (size L) | J-sleeve | Quarter-zip, high neck | Machine wash using wool-cycle

VÅGSØY SWEATER 95391

NEW



O00*
MUSTARD /
OFF WHITE

F00*
BLACK /
OFF WHITE

S - XXL | Regular fit | Mid layer, heavy knit | 100% lightweight wool | Seagull 27 micron | Neckline in skin soft merino wool
3-ply | 5 gauge | 765g (size L) | Raglan sleeve | Crew neck | Machine wash using wool-cycle

SØRØY SHACKET 75031

NEW



F00*
BLACK

S - XXL | Loose fit | Mid layer, light knit | 100% fine Norwegian wool | Heron 30.5 micron
2-ply | 14 gauge | 573g (size L) | T-sleeve | Button closure | Machine wash using wool-cycle

VEGARD SWEATER 94991



F
BLACK / OFF WHITE /
RED ROSE

OOO*
MUSTARD /
OFF WHITE / COPPER

C
NAVY / OFF WHITE /
RASPBERRY

S - XXL | Regular fit | Mid layer, heavy knit | 100% lightweight wool | Seagull 27 micron | Neckline in skin soft merino wool
3-ply | 5 gauge | 930g (size L) | J-sleeve | Crew neck | Machine wash using wool-cycle

VEGARD JACKET 83891



N00*
DARK GREEN /
SAND / MUSTARD

C
NAVY / OFF WHITE /
RASPBERRY

S - XXL | Regular fit | Mid layer, heavy knit | 100% lightweight wool | Seagull 27 micron | Neckline in skin soft merino wool
3-ply | 5 gauge | 1040g (size L) | J-sleeve | Crew neck | Norwegian-made pewter buttons | Machine wash using wool-cycle



ALVØY SWEATER 94971



E
SMOKE /
OFF WHITE

F
BLACK /
OFF WHITE

S - XXL | Regular fit | Mid layer, regular knit | 100% fine Norwegian wool | Heron 30.5 micron | Neckline in skin soft merino wool
3-ply | 10 gauge | 690g (size L) | T-sleeve | Quarter-zip, high neck | Machine wash using wool-cycle

TYSSØY SWEATER 94411



N
DARK GREEN /
OFF WHITE / MUSTARD

C
NAVY / OFF WHITE /
RASPBERRY

XS - XXL | Regular fit | Mid layer, regular knit | 100% fine Norwegian wool | Heron 30.5 micron | Neckline in skin soft merino wool
3-ply | 10 gauge | 570g (size L) | T-sleeve | Low neck | Machine wash using wool-cycle

MYKING SWEATER 93141



C
NAVY / OFF WHITE /
LIGHT CHARCOAL

F
BLACK / OFF WHITE /
RASPBERRY

S - XXL | Regular fit | Mid layer, heavy knit | 100% exclusive air-spun merino wool | Husky 19.5 micron
1-ply | 2.5 gauge | 870g (size L) | French shoulders | Quarter-zip, high neck | Hand wash



Alvøy quilted jacket



Men's
Outer layer

Vegard WP hoodie

delivery from autumn

URBAN
outer layer / men

VEGARD WEATHERPROOF HOODIE 95231

NEW



A00*
OFF WHITE / BLACK /
RED ROSE

C00*
NAVY / OFF WHITE /
SMOKE



S - XXL | Loose fit | Outer layer, heavy knit | 100% long-lasting Norwegian wool | Plover nano 33.5 micron | Windproof lining
3-ply | 5 gauge | 1450g (size L) | T-sleeve | Quarter-zip, zippered front pockets | Drawstring hood | Hand wash

ALVØY QUILTED JACKET 85311

NEW



F00*
BLACK /
OFF WHITE

E00*
BLACK /
SMOKE



S - XL | Regular fit | Outer layer | 100% skin soft merino wool | Zefir Nano 20.5 micron | 2-ply | 10 gauge | 1615g (size M) | J-sleeve | Two-way zipper, zippered front pockets | Drawstring hood | Insulation: Lavalan virgin wool fibre fill. Lining: skin soft merino wool 16.5 micron | Hand wash

STORD DOWN PARKA 55091

NEW



C00*
NAVY

S - XXL | Regular fit | Outer layer | Main fabric: 100% brushed polyester | Insulation: Recycled Down 90/10 | Lining: 100% polyester
Synthetic fur | 1480g (size L) | J-sleeve | Full length two-way zipper, front placket with button closure, zippered front pockets | Dry clean only

Heritage





Women's
Mid layer

Peace sweater

delivery from spring

HERITAGE
mid layer / women

WINTER STAR SWEATER 95321

NEW



B00*
OFF WHITE /
RASPBERRY

N00*
OFF WHITE /
DARK GREEN

F00*
BLACK /
OFF WHITE

S - XL | Regular fit | Mid layer, regular knit | 100% fine Norwegian wool | Heron 30.5 micron | Neckline in skin soft merino wool 3-ply | 10 gauge | 500 g (size M) | T-sleeve | Medium high neck | Machine wash using wool-cycle

WINTERLAND SWEATER 95281

NEW



B00*
RASPBERRY /
OFF WHITE / RED ROSE

N00*
DARK GREEN /
OFF WHITE / SAND

S - XL | Regular fit | Mid layer, regular knit | 100% skin soft merino wool | Zefir 20.5 micron 2-ply | 10 gauge | 500 g (size M) | J-sleeve | Quarter-zip, medium high neck | Machine wash using wool-cycle

140TH ANNIVERSARY JACKET 83481



A
OFF WHITE / SMOKE /
LIGHT CHARCOAL

H
NAVY / RED ROSE /
OFF WHITE

F
BLACK / OFF WHITE /
SMOKE

XS - XL | Regular fit | Mid layer, regular knit | 100% lightweight wool | Seagull 27 micron | Neckline in skin soft merino wool 2-ply | 7 gauge | 640g (size M) | J-sleeve | Two-way zipper, medium high neck | Machine wash using wool-cycle

INGEBORG JACKET 83521



P BEIGE / OFF WHITE
I DAWN PINK / OFF WHITE
C ELECTRIC STORM / OFF WHITE
A BLACK / OFF WHITE

XS - XL | Loose fit | Mid layer, light knit | 100% skin soft merino wool | Zefir 20.5 micron
1-ply | 14 gauge | 640g (size M) | J-sleeve | Two-way zipper, low neck | Machine wash using wool-cycle

CHRISTIANIA JACKET 81951



I DAWN PINK / OFF WHITE
A METAL GREY / OFF WHITE
R GOLD / OFF WHITE
Q RUBY RED / OFF WHITE



C ATLANTIC BLUE / OFF WHITE
E SCHIEFER / OFF WHITE
F BLACK / OFF WHITE

XS - XXL | Regular fit | Mid layer, light knit | 100% skin soft merino wool | Zefir 20.5 micron
1-ply | 14 gauge | 580g (size M) | J-sleeve | Two-way zipper, medium high neck | Machine wash using wool-cycle

SOLFRID JACKET 83341



I DAWN PINK / OFF WHITE / FLINT
P BEIGE / OFF WHITE / CIOCCOLATA BROWN
A NAVY / OFF WHITE / ELECTRIC STORM
J BLACK / OFF WHITE / SCHIEFER

XS - XXL | Mid layer | Loose fit, light knit | 100% skin soft merino wool | Zefir 20.5 micron
1-ply | 14 gauge | 520g/m2 | J-sleeve | Two-way zipper, medium high neck | Machine wash using wool-cycle

PEACE SWEATER 13312



H ULTRAMARINE / OFF WHITE
O00* MUSTARD / OFF WHITE
B RED ROSE / OFF WHITE



Q00* AUBERGINE / OFF WHITE
C NAVY / ICE BLUE
F BLACK / OFF WHITE

S - XXL | Regular fit | Mid layer, regular knit | 100% lightweight wool | Seagull 27 micron | Neckline in skin soft fleece
2-ply | 7 gauge | 630g (size M) | J-sleeve | Quarter-zip, medium high neck | Norwegian-made pewter buttons & heart zip puller | Machine wash using wool-cycle

BRIMSE JACKET 83761



A
OFF WHITE / BLACK /
SMOKE



B
RASPBERRY / OFF WHITE /
RED ROSE



C
NAVY / OFF WHITE /
RASPBERRY

XS - XL | Regular fit | Mid layer, regular knit | 100% lightweight wool | Seagull 27 micron | Neckline in skin soft merino wool
2-ply | 7 gauge | 740g/m2 | J-sleeve | Button closure with horn buttons, medium high neck | Machine wash using wool-cycle

KVINESDAL JACKET 83801



P
OFF WHITE / ARMY GREEN /
MOUNTAINSTONE



C
NAVY / INDIGO /
RED ROSE



F
BLACK / SMOKE /
DARK CHARCOAL

S - XL | Regular fit | Mid layer, regular knit | 100% fine Norwegian wool | Heron 30.5 micron | Neckline in skin soft merino wool
3-ply | 10 gauge | 730g (size M) | J-sleeve | Two-way zipper, medium high neck | Machine wash using wool-cycle

KVITSEID JACKET 83781



N
DARK GREEN /
OFF WHITE



C
NAVY /
OFF WHITE



F
BLACK /
DARK CHARCOAL

S - XL | Regular fit | Mid layer, regular knit | 100% fine Norwegian wool | Heron 30.5 micron | Neckline in skin soft merino wool
3-ply | 10 gauge | 630g (size M) | J-sleeve | Two-way zipper, medium high neck | Machine wash using wool-cycle



Christiania jacket & Lindøy down jacket



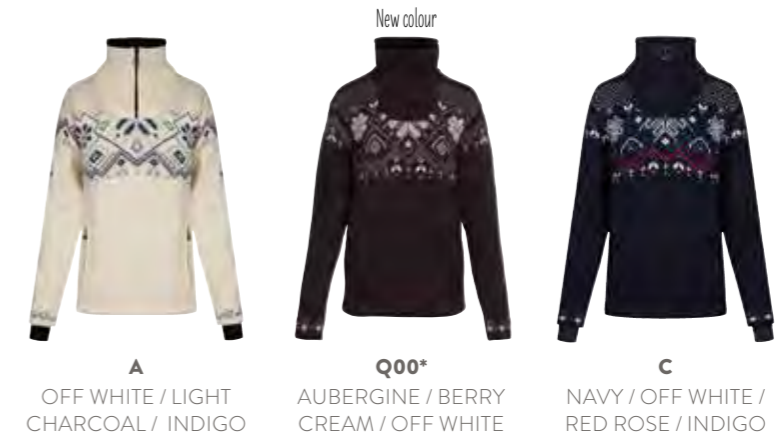
Women's
Outer layer

Fongen WP sweater

delivery from spring

HERITAGE
outer layer / women

FONGEN WEATHERPROOF SWEATER 93961



A
OFF WHITE / LIGHT
CHARCOAL / INDIGO

New colour
Q00*
AUBERGINE / BERRY
CREAM / OFF WHITE

C
NAVY / OFF WHITE /
RED ROSE / INDIGO



S - XL | Regular fit | Outer layer, heavy knit | 100% long-lasting Norwegian wool | Plover nano 33.5 micron | Windproof lining
4-ply | 5 gauge | 1150g (size M) | T-sleeve | Quarter-zip, high neck | Two zippered front pockets | Hand gaiters with thumb holes | Hand wash



Peace sweater & Fongen WP sweater



Unisex
Mid layer

Cortina 1956 unisex sweater

delivery from spring

HERITAGE
mid layer / unisex

SETESDAL UNISEX SWEATER 93781



A
OFF WHITE /
BLACK

F
BLACK /
OFF WHITE

XS - XXXL | Regular fit | Mid layer, heavy knit | 100% long-lasting Norwegian wool | Plover 33.5 micron
3-ply | 5 gauge | 895g (size L) | T-sleeve | Crew neck | Norwegian-made pewter clasps | Hand wash

SETESDAL UNISEX JACKET 83291



A
OFF WHITE /
BLACK

F
BLACK /
OFF WHITE

XS - XXXL | Regular fit | Mid layer, heavy knit | 100% long-lasting Norwegian wool | Plover 33.5 micron
3-ply | 5 gauge | 1070g (size L) | T-sleeve | Crew neck | Norwegian-made pewter clasps | Hand wash

CORTINA 1956 UNISEX SWEATER 92521



E
LIGHT CHARCOAL /
OFF WHITE

B
RASPBERRY /
OFF WHITE

C
NAVY /
OFF WHITE

XS - XXXL | Regular fit | Mid layer, heavy knit | 100% long-lasting Norwegian wool | Plover 33.5 micron
3-ply | 5 gauge | 800g (size L) | T-sleeve | Crew neck | Hand wash



Men's
Mid layer

Vegvisir sweater

delivery from spring

HERITAGE
mid layer / men

WINTER STAR SWEATER 95331

NEW



N00*
OFF WHITE /
DARK GREEN

F00*
BLACK /
OFF WHITE

S - XXL | Regular fit | Mid layer, regular knit | 100% fine Norwegian wool | Heron 30.5 micron | Neckline in skin soft merino wool
3-ply | 10 gauge | 610g (size L) | T-sleeve | Crew neck | Machine wash using wool-cycle

WINTERLAND SWEATER 95291

NEW



N00*
DARK GREEN / OFF WHITE /
MOUNTAINSTONE

C00*
NAVY / OFF WHITE /
RASPBERRY

S - XXL | Regular fit | Mid layer, regular knit | 100% skin soft merino wool | Zefir 20.5 micron
2-ply | 10 gauge | 610 (size L) | J-sleeve | Quarter-zip, medium high neck | Machine wash using wool-cycle

SVERRE SWEATER 93031



H NAVY / OFF WHITE / SMOKE
E DARK GREY / OFF WHITE / RASPBERRY

S - XXL | Regular fit | Mid layer, light knit | 100% skinsoft extra-fine merino wool | Leonora 19.5 micron
1-ply | 14 gauge | 360g (size L) | French shoulders | Crew neck | Machine wash using wool-cycle

HOVDEN SWEATER 93441



N DARK GREEN / OFF WHITE / LIGHT CHARCOAL
C NAVY / OFF WHITE / BLUE SHADOW
F BLACK / OFF WHITE / LIGHT CHARCOAL

S - XXL | Regular fit | Mid layer, light knit | 100% skin soft merino wool | Zefir 20.5 micron
1-ply | 14 gauge | 440g (size L) | J-sleeve | Quarter-zip, medium high neck | Machine wash using wool-cycle

HOVDEN JACKET 83191



N DARK GREEN / OFF WHITE / LIGHT CHARCOAL
C NAVY / OFF WHITE / BLUE SHADOW
E DARK CHARCOAL / LIGHT CHARCOAL / SMOKE

S - XXL | Regular fit | Mid layer, light knit | 100% skin soft merino wool | Zefir 20.5 micron
1-ply | 14 gauge | 460g (size L) | J-sleeve | Full zip, medium high neck | Machine wash using wool-cycle

VEGVISIR SWEATER 94691



T SMOKE
N ARMY GREEN
C NAVY

S - XXL | Regular fit | Mid layer, regular knit | 100% fine Norwegian wool | Heron 30.5 micron | Neckline in skin soft merino wool
6-ply | 7 gauge | 770g (size L) | Saddle sleeve | Quarter-zip, medium high neck | Machine wash using wool-cycle

SIGURD SWEATER 94671



E DARK CHARCOAL / SMOKE
N ARMY GREEN / BLACK
C NAVY / OFF WHITE

S - XXL | Regular fit | Mid layer, regular knit | 100% fine Norwegian wool | Heron 30.5 micron | Neckline in skin soft merino wool
6-ply | 7 gauge | 790g (size L) | Saddle sleeve | Horn buttons, medium high neck | Machine wash using wool-cycle

HODUR SWEATER 94711



E DARK CHARCOAL / SMOKE / BLACK
N ARMY GREEN / BLACK / DARK CHARCOAL
C NAVY / OFF WHITE / RED ROSE

S - XXL | Regular fit | Mid layer, regular knit | 100% fine Norwegian wool | Heron 30.5 micron | Neckline in skin soft merino wool
6-ply | 7 gauge | 970g (size L) | J-sleeve | Norwegian-made pewter clasps, medium high neck | Machine wash using wool-cycle

VAIL SWEATER 90331

New colour



N00* OFF WHITE / DARK GREEN / SMOKE
A OFF WHITE / MIDNIGHT NAVY / BLUE SHADOW
T SMOKE / OFF WHITE / RASPBERRY
C MIDNIGHT NAVY / OFF WHITE / RED ROSE

XS - XXXL | Regular fit | Mid layer, heavy knit | 100% long-lasting Norwegian wool | Plover 33.5 micron | Neckline in skin soft fleece 3-ply | 5 gauge | 990g (size L) | T-sleeve | Quarter-zip, medium high neck | Hand wash

140TH ANNIVERSARY SWEATER 93951



E LIGHT CHARCOAL / SMOKE / OFF WHITE
H NAVY / RED ROSE / OFF WHITE
F BLACK / SMOKE / OFF WHITE

S - XXXL | Regular fit | Mid layer, heavy knit | 100% long-lasting Norwegian wool | Plover 33.5 micron | Neckline in skin soft merino wool 3-ply | 5 gauge | 1060g (size L) | T-sleeve | Quarter-zip, medium high neck | Norwegian-made pewter buttons on the cuffs | Hand wash

BLYFJELL SWEATER 95021

New colour



E SMOKE / OFF WHITE / DARK CHARCOAL
U00* COPPER / MARINE / OFF WHITE
C NAVY / OFF WHITE / BLUE SHADOW
K BLACK / OFF WHITE / SMOKE

S - XXL | Regular fit | 100% lightweight wool | Mid layer, regular knit | Seagull 27 micron | Neckline in skin soft fleece | Elk leather trim along the zipper 2-ply | 7 gauge | 830g (size L) | T-sleeve | Quarter-zip, medium high neck | Machine wash using wool-cycle



Blyfjell sweater



Men's
Outer layer

Vail WP sweater

delivery from spring

HERITAGE
outer layer / men

FONGEN WEATHERPROOF SWEATER 93971



E
SMOKE / OFF WHITE /
INDIGO

New colour
U00*
COPPER / MARINE /
OFF WHITE

C
NAVY / OFF WHITE /
RED ROSE



S - XXXL | Regular fit | Outer layer, heavy knit | 100% long-lasting Norwegian wool | Plover nano 33.5 micron | Windproof lining
4-ply | 5 gauge | 1430g (size L) | T-sleeve | Quarter-zip, high neck | Zippered front pockets | Cuffs with thumb holes | Hand wash

VAIL WEATHERPROOF SWEATER 93981



A
OFF WHITE / MIDNIGHT
NAVY / BLUE SHADOW

T
SMOKE / OFF WHITE /
RASPBERRY

C
MIDNIGHT NAVY / OFF
WHITE / RED ROSE



S - XXXL | Regular fit | Outer layer, heavy knit | 100% long-lasting Norwegian wool | Plover nano 33.5 micron | Windproof lining
3-ply | 5 gauge | 1330g (size L) | T-sleeve | Quarter-zip, high neck | Zippered front pockets | Cuffs with thumb holes | Hand wash



Kids

WINTERLAND SWEATER 95301

NEW



B00*
RASPBERRY /
OFF WHITE / NAVY

C00*
NAVY / OFF WHITE /
RASPBERRY

2-12 years | Mid layer | Regular fit | 100% skinsoft merino wool | Zefir 20.5 micron
2-ply | 10 gauge | 260g (size 6 years) | T-sleeve | Crew neck | Machine wash using wool-cycle

OLYMPIA SWEATER 95561

NEW



C00*
NAVY / OFF WHITE /
RASPBERRY

2-12 years | Mid layer | Regular fit, light knit | 100% skinsoft merino wool | Zefir 20.5 micron
1-ply | 14 gauge | 230g (size 6 years) | J-sleeve | Medium high neck | Machine wash using wool-cycle

OL SPIRIT SWEATER 94781



C
NAVY / OFF WHITE /
RASPBERRY

2-12 years | Mid layer | Regular fit, light knit | 100% skinsoft merino wool | Zefir 20.5 micron
1-ply | 14 gauge | 259g (size 6 years) | J-sleeve | Quarter-zip, medium high neck | Machine wash using wool-cycle

CORTINA SWEATER 92991



E
LIGHT CHARCOAL /
OFF WHITE

I
PINK CANDY /
OFF WHITE

B
RASPBERRY /
OFF WHITE

H
ULTRAMARINE /
OFF WHITE

C
NAVY /
OFF WHITE

6 months-12 years | Mid layer | Regular fit | 100% skinsoft merino wool | Zefir 20.5 micron
3-ply | 7 gauge | 310g (size 6 years) | T-sleeve | Crew neck | Machine wash using wool-cycle

MORITZ SWEATER 9150



Q
PINK CANDY /
OFF WHITE / GREY

D
BLUE SHADOW /
GREY / OFF WHITE

H
ULTRAMARINE /
NAVY / OFFWHITE

2-12 years | Mid layer | Regular fit | 100% skinsoft merino wool | Zefir 20.5 micron
2-ply | 10 gauge | 350g (size 6 years) | Set-in sleeve | Quarter-zip, medium high neck | Machine wash using wool-cycle

Accessories





Alvøy hat & Fongen WP sweater

MORITZ MITTENS 25031

NEW



A00*
OFF WHITE / NAVY /
RASPBERRY

F00*
BLACK / SMOKE /
OFFWHITE

Unisex | One size | Regular knit | 100% skin soft merino wool | Zefir nano 20.5 micron
2-ply | 10 gauge | Machine wash using wool-cycle



FALUN MITTENS 25051

NEW



B00*
RASPBERRY /
OFF WHITE

F00*
BLACK /
OFF WHITE

Unisex | One size | Regular knit | 100% skin soft merino wool | Zefir nano 20.5 micron
2-ply | 10 gauge | Machine wash using wool-cycle



VILJA MITTENS 25041

NEW



A00*
OFF WHITE /
BLACK / RASPBERRY

B00*
RASPBERRY /
OFF WHITE / NAVY

C00*
NAVY / OFF WHITE /
RASPBERRY

Unisex | One size | Regular knit | 100% skin soft merino wool | Zefir nano 20.5 micron
2-ply | 10 gauge | Machine wash using wool-cycle



OLYMPIA HAT 49051

NEW



A00*
OFF WHITE /
SMOKE / NAVY

B00*
RASPBERRY /
OFF WHITE / NAVY

C00*
NAVY /
OFF WHITE / RASPBERRY

Unisex | One size | Light knit | 100% skin soft merino wool | Zefir 20.5 micron | Polypropylene lining
1-ply | 14 gauge | Machine wash using wool-cycle

MOUNT OLYMPUS HAT 49041

NEW



O00*
MUSTARD / OFF WHITE /
BLUE SHADOW

B00*
RASPBERRY /
OFF WHITE / NAVY

N00*
DARK GREEN /
OFF WHITE / SMOKE

C00*
NAVY / OFF WHITE /
RASPBERRY

Unisex | One size | Light knit | 100% skin soft merino wool | Zefir 20.5 micron | Polypropylene lining
1-ply | 14 gauge | Machine wash using wool-cycle

DYSTINGEN HAT 48981

NEW



E00*
SMOKE / OFF WHITE /
NAVY

B00*
RASPBERRY /
OFF WHITE / BLACK

C00*
NAVY / OFF WHITE /
RASPBERRY

Unisex | One size | Light knit | 100% skin soft merino wool | Zefir 20.5 micron | Polypropylene lining
1-ply | 14 gauge | Machine wash using wool-cycle

TEAM NORWAY HAT 49061

NEW



O00*
MUSTARD /
OFF WHITE

D00*
BLUE SHADOW /
OFF WHITE

B00*
RASPBERRY /
SMOKE

C00*
NAVY /
OFF WHITE

Unisex | One size | Light knit | 100% skin soft merino wool | Zefir 20.5 micron | Polypropylene lining
1-ply | 14 gauge | Machine wash using wool-cycle

1879 HAT 49071

NEW



E00*
SMOKE /
DARK CHARCOAL

C00*
NAVY /
OFF WHITE

F00*
BLACK /
SMOKE

Unisex | One size | Regular knit | 100% lightweight wool | Seagull 27 micron | Skin soft merino wool lining
2-ply | 7 gauge | Machine wash using wool-cycle

BJORØY HAT 48971

NEW



O00*
MUSTARD /
OFF WHITE

Q00*
AUBERGINE /
SAND

F00*
BLACK /
OFF WHITE

Unisex | One size | Regular knit | 100% fine Norwegian wool | Heron 30.5 micron | Rib knit with skin soft merino on the inside of brim
3-ply | 10 gauge | Machine wash using wool-cycle

VILJA HAT 48941

NEW



H00*
OFF WHITE / ULTRA-MARINE / RASPBERRY

C00*
OFF WHITE / NAVY RASPBERRY

D00*
BLUE SHADOW / OFF WHITE / MUSTARD

F00*
BLACK / OFF WHITE / RASPBERRY

Unisex | One size | Heavy knit | 100% lightweight wool | Seagull 27 micron | Rib knit with skin soft merino on the inside of brim
3-ply | 5 gauge | Machine wash using wool-cycle

WINTERLAND HAT 49011

NEW



B00*
RASPBERRY / OFF WHITE / RED ROSE

N00*
DARK GREEN / OFF WHITE / SAND

C00*
NAVY / OFF WHITE / RASPBERRY

Unisex | One size | Light knit | 100% skin soft merino wool | Zefir 20.5 micron | Fully lined with extra-fine merino wool
1-ply | 14 gauge | Machine wash using wool-cycle

WINTER STAR HAT 48991

NEW



B00*
RASPBERRY / OFF WHITE

N00*
DARK GREEN / OFF WHITE

F00*
BLACK / OFF WHITE

Unisex | One size | Regular knit | 100% fine Norwegian wool | Heron 30.5 micron | Rib knit with skin soft merino on the inside of brim
3-ply | 10 gauge | Machine wash using wool-cycle

MÅLØY HAT 48961

NEW



A00*
OFF WHITE

T00*
LIGHT CHARCOAL

C00*
NAVY

E00*
SMOKE

Unisex | One size | Heavy knit | 100% exclusive air-spun merino wool | Husky 19.5 micron
1-ply | 5 gauge | Hand wash

ALVØY HAT 48931

New colour



E00*
SMOKE / OFF WHITE

New colour



D00*
BLUE SHADOW / MUSTARD

New colour



O00*
MUSTARD / OFF WHITE

New colour



N00*
DARK GREEN / ORANGE PEEL

New colour



U00*
COPPER / NAVY

New colour



Q00*
AUBERGINE / RED ROSE

New colour



C00*
NAVY / COPPER

New colour



F00*
BLACK / OFF WHITE

Unisex | One size | Regular knit | 100% fine Norwegian wool | Heron 30.5 micron | Inside of hat rib knitted with skin soft merino
3-ply | 10 gauge | Machine wash using wool-cycle

GARMISCH HAT 47971



A OFF WHITE / NAVY / RASPBERRY
B RASPBERRY / OFF WHITE / NAVY
C NAVY / OFF WHITE / RASPBERRY
F BLACK / OFF WHITE / DARK CHARCOAL

Unisex | One size | Regular knit | 100% skin soft merino wool | Zefir 20.5 micron | Fully lined with extra-fine merino wool 2-ply | 10 gauge | Machine wash using wool-cycle

CORTINA HERON HAT 48921



E SMOKE / OFF WHITE
B RASPBERRY / OFF WHITE
C NAVY / OFF WHITE

Unisex | One size | Regular knit | 100% fine Norwegian wool | Heron 30.5 micron | Rib knit with skin soft merino on the inside of brim 3-ply | 10 gauge | Machine wash using wool-cycle

HOVDEN HAT 48081



C NAVY / OFF WHITE / BLUE SHADOW
F BLACK / OFF WHITE / SMOKE

Unisex | One size | Light knit | 100% skin soft merino wool | Zefir 20.5 micron 1-ply | 14 gauge | Machine wash using wool-cycle

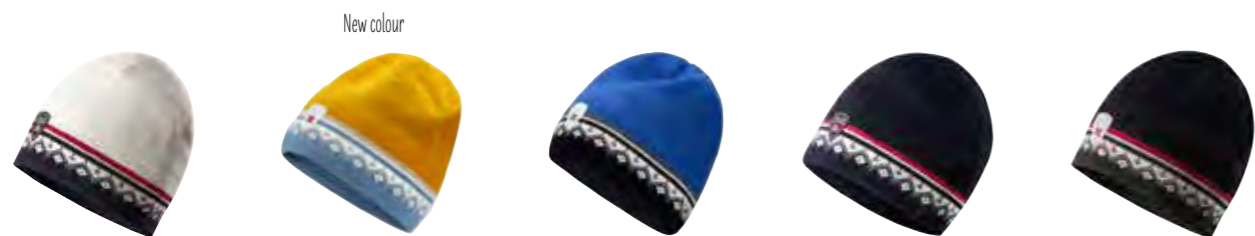
CORTINA 1956 HAT 42261



E LIGHT CHARCOAL / OFF WHITE
B RASPBERRY / OFF WHITE
C NAVY / OFF WHITE

Unisex | One size | Heavy knit | 100% long-lasting Norwegian wool | Plover 33.5 micron | Fully lined with extra-fine merino wool 4-ply | 5 gauge | Hand wash

MORITZ HAT 48361



A OFF WHITE / NAVY / RASPBERRY
D00* MUSTARD / OFF WHITE / BLUE SHADOW
R ULTRAMARINE / NAVY / OFF WHITE
C NAVY / RASPBERRY / OFF WHITE
E DARK CHARCOAL / RASPBERRY / BLACK

Unisex | One size | Regular knit | 100% skin soft merino wool | Zefir 20.5 micron | Fully lined with extra-fine merino wool 2-ply | 10 gauge | Machine wash using wool-cycle

CORTINA MERINO HAT 48211



E SMOKE / OFF WHITE
B RASPBERRY / OFF WHITE
D BLUE SHADOW / OFF WHITE
C NAVY / OFF WHITE
F BLACK / OFF WHITE

Unisex | One size | Heavy knit | 100% skin soft merino wool | Zefir 20.5 micron 3-ply | 5 gauge | Machine wash using wool-cycle

SPIRIT HAT 48891



C
NAVY / OFF WHITE /
RASPBERRY

Unisex | One size | Light knit | 100% skin soft merino wool | Zefir 20.5 micron
1-ply | 14 gauge | Machine wash using wool-cycle

NORWAY HAT 48901



C
NAVY / OFF WHITE /
RASPBERRY

Unisex | One size | Light knit | 100% skin soft merino wool | Zefir 20.5 micron
1-ply | 14 gauge | Machine wash using wool-cycle

VAIL HAT 40331

New colour



N00*
DARK GREEN / OFF
WHITE / LIGHT CHARCOAL



C
NAVY / OFF WHITE /
RED ROSE



F
BLACK / OFF WHITE /
LIGHT CHARCOAL

Unisex | One size | Heavy knit | 100% long-lasting Norwegian wool | Plover 33.5 micron | Half lined with extra-fine merino wool
4-ply | 5 gauge | Hand wash

HARALD HAT 48061



P
SAND /
DARK CHARCOAL



U
MEDIUM BLUE /
NAVY



W
NAVY /
DARK CHARCOAL



F
BLACK /
DARK CHARCOAL

Unisex | One size | Light knit | 100% skin soft extra-fine merino wool | Leonora 19.5 micron
1-ply | 14 gauge | Machine wash using wool-cycle

MYKING HAT 48001



C
NAVY / LIGHT
CHARCOAL / OFF WHITE



F
BLACK / OFF WHITE /
RASPBERRY

Unisex | One size | Heavy knit | 100% exclusive air-spun merino wool | Husky 19.5 micron
1-ply | 2.5 gauge | Hand wash

VILDE HAT 48321



A
OFF WHITE



D00*
BLUE SHADOW



O00*
MUSTARD



N00*
DARK GREEN



E
DARK CHARCOAL

Unisex | One size | Heavy knit | 100% long-lasting Norwegian wool | Plover 33.5 micron | Half lined with extra-fine merino wool
4-ply | 5 gauge | Norwegian Wild Sheep pom pom | Hand wash

CHRISTIANIA HAT 48701



I
DAWN PINK /
OFF WHITE



A
METAL /
OFF WHITE



P
BEIGE /
OFF WHITE



E
SCHIEFER /
OFF WHITE



F
BLACK /
OFF WHITE



V
RUBY RED /
DARK CHARCOAL



H
ELECTRIC STORM /
SMOKE

One size | Light knit | 100% skin soft merino wool | Zefir 20.5 micron
1-ply | 14 gauge | Machine wash using wool-cycle



Alvøy hat & Fongen WP sweater

OLYMPIA HEADBAND 26811

NEW



A00*
OFF WHITE /
NAVY / SMOKE

B00*
RASPBERRY /
NAVY / OFF WHITE

C00*
NAVY / RASPERRY /
OFF WHITE

Unisex | One size | Light knit | 100% skin soft merino wool | Zefir 20.5 micron | Polypropylene lining
1-ply | 14 gauge | Machine wash using wool-cycle

DYSTINGEN HEADBAND 26801

NEW



E00*
SMOKE / OFF WHITE /
NAVY

B00*
RASPBERRY /
OFF WHITE / BLACK

C00*
NAVY / OFF WHITE /
RASPBERRY

Unisex | One size | Light knit | 100% skin soft merino wool | Zefir 20.5 micron | Polypropylene lining
1-ply | 14 gauge | Machine wash using wool-cycle

SPIRIT HEADBAND 26771



C
NAVY / OFF WHITE /
RASPBERRY

Unisex | One size | Light knit | 100% skin soft merino wool | Zefir 20.5 micron | Polypropylene lining
1-ply | 14 gauge | Machine wash using wool-cycle

GARMISCH HEADBAND 25971



A
OFF WHITE / NAVY /
RASPBERRY

B
RASPBERRY /
OFF WHITE / NAVY

C
NAVY / OFF WHITE /
RASPBERRY

F
BLACK / OFF WHITE /
DARK CHARCOAL

Unisex | One size | Regular knit | 100% skin soft merino wool | Zefir 20.5 micron | Fully lined with extra-fine merino wool
2-ply | 10 gauge | Machine wash using wool-cycle

MORITZ HEADBAND 26091



D00*
BLUE SHADOW /
MUSTARD / OFF WHITE

R
ULTRAMARINE /
NAVY / OFF WHITE

C
NAVY / RASPERRY /
OFF WHITE

E
DARK CHARCOAL /
RASPBERRY / BLACK

Unisex | One size | Regular knit | 100% skin soft merino wool | Zefir 20.5 micron | Fully lined with extra-fine merino wool
2-ply | 10 gauge | Machine wash using wool-cycle

NORWAY HEADBAND 26781



C
NAVY / OFF WHITE /
RASPBERRY

Unisex | One size | Light knit | 100% skin soft merino wool | Zefir 20.5 micron | Polypropylene lining
1-ply | 14 gauge | Machine wash using wool-cycle

CORTINA MERINO HEADBAND 26021



E SMOKE / OFF WHITE
B RASPBERRY / OFF WHITE
D BLUE SHADOW / OFF WHITE
C NAVY / OFF WHITE
F BLACK / OFF WHITE

Unisex | One size | Heavy knit | 100% skin soft merino wool | Zefir 20.5 micron | Fully lined with extra-fine merino wool
 3-ply | 5 gauge | Machine wash using wool-cycle

CORTINA 1956 HEADBAND 25014



E OFF WHITE / LIGHT CHARCOAL
B RASPBERRY / OFF WHITE
C NAVY / OFF WHITE

Unisex | One size | Heavy knit | 100% long-lasting Norwegian wool | Plover 33.5 micron | Fully lined with extra-fine merino wool
 4-ply | 5 gauge | Hand wash

CHRISTIANIA HEADBAND 26701



I DAWN PINK / OFF WHITE
A METAL / OFF WHITE
P BEIGE / OFF WHITE
E SCHIEFER / OFF WHITE

One size | Light knit | 100% skin soft merino wool | Zefir 20.5 micron | Fully lined with extra-fine merino wool
 1-ply | 14 gauge | Machine wash using wool-cycle



F BLACK / OFF WHITE
V RUBY RED / DARK CHARCOAL
H ELECTRIC STORM / SMOKE

SPIRIT NECK 11831



C
NAVY /
OFF WHITE / RASPBERRY

Unisex | One size | Light knit | 60% skin soft extra-fine merino wool, 40% Tencel | Progress 19.5 micron
1-ply | 14 gauge | Machine wash using wool-cycle

GARMISCH SCARF 11691



B
RASPBERRY /
OFF WHITE / NAVY



C
NAVY / OFF WHITE /
RASPBERRY



F
BLACK / OFF WHITE /
DARK CHARCOAL

Unisex | One size | Light knit | 100% skin soft merino wool | Zefir 20.5 micron | Length: 160 cm / Width: 23 cm
1-ply | 14 gauge | Machine wash using wool-cycle

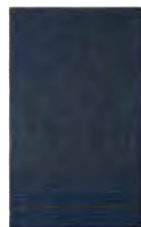
HARALD SCARF 10981



P
SAND /
DARK CHARCOAL



U
MEDIUM BLUE /
NAVY



W
NAVY /
DARK CHARCOAL



F
BLACK /
DARK CHARCOAL

Unisex | One size | Light knit | 100% skin soft extra-fine merino wool | Leonora 19.5 micron | Length: 160 cm / Width: 23 cm
1-ply | 14 gauge | Machine wash using wool-cycle

CHRISTIANIA SCARF 11701



I
DAWN PINK /
OFF WHITE



A
OFF WHITE /
METAL



P
BEIGE /
OFF WHITE



E
SCHIEFER /
OFF WHITE



F
BLACK /
OFF WHITE



V
RUBY RED /
DARK CHARCOAL



H
ELECTRIC STORM /
SMOKE

One size | Light knit | 100% skin soft merino wool | Zefir 20.5 micron | Length: 200 cm / Width: 30 cm
1-ply | 14 gauge | Machine wash using wool-cycle

SPIRIT SOCKS - CREW CUT 50121



A
OFF WHITE / NAVY /
RASPBERRY

C
NAVY / RASPBerry /
OFF WHITE

S-M / L-XL | Unisex | 75% merino wool, 15% nylon, 7% polyester, 3% elastane | Machine wash using wool cycle

SPIRIT SOCKS - KNEE HIGH 50131



A
OFF WHITE / NAVY /
RASPBERRY

C
NAVY / RASPBerry /
OFF WHITE

S-M / L-XL | Unisex | 75% merino wool, 15% nylon, 7% polyester, 3% elastane | Machine wash using wool cycle

HISTORY SOCKS - CREW CUT 50141



B
RASPBERRY /
OFF WHITE / NAVY

C
NAVY / OFF WHITE /
RASPBERRY

S-M / L-XL | Unisex | 75% merino wool, 15% nylon, 7% polyester, 3% elastane | Machine wash using wool cycle

HISTORY SOCKS - KNEE HIGH 50151



B
RASPBERRY /
OFF WHITE / NAVY

C
NAVY / OFF WHITE /
RASPBERRY

S-M / L-XL | Unisex | 75% merino wool, 15% nylon, 7% polyester, 3% elastane | Machine wash using wool cycle

CORTINA SOCKS - CREW CUT 50101



A
OFF WHITE / NAVY /
RASPBERRY

O
MUSTARD / OFF WHITE /
DARK CHARCOAL

B
RASPBERRY /
OFF WHITE / NAVY

H
ULTRAMARINE /
OFF WHITE / NAVY

S-M / L-XL | Unisex | 75% merino wool, 15% nylon, 7% polyester, 3% elastane | Machine wash using wool cycle

CORTINA SOCKS - KNEE HIGH 50111



A
OFF WHITE / NAVY /
RASPBERRY

O
MUSTARD / OFF WHITE /
DARK CHARCOAL

B
RASPBERRY /
OFF WHITE / NAVY

H
ULTRAMARINE /
OFF WHITE / NAVY

S-M / L-XL | Unisex | 75% merino wool, 15% nylon, 7% polyester, 3% elastane | Machine wash using wool cycle



OLYMPIA KIDS'HAT 49081

NEW



B00*
RASPBERRY /
OFF WHITE / NAVY

C00*
NAVY / OFF WHITE /
RASPBERRY

4-8 years | One size | Light knit | 100% skin soft merino wool | Zefir 20.5 micron
1-ply | 14 gauge | Machine wash using wool-cycle

WINTERLAND KIDS'HAT 49021

NEW



B00*
RASPBERRY /
OFF WHITE / RED ROSE

C00*
NAVY / OFF WHITE /
RASPBERRY

4-8 years | One size | Light knit | 100% skin soft merino wool | Zefir 20.5 micron | Fully lined with extra-fine merino wool
1-ply | 14 gauge | Machine wash using wool-cycle

SPIRIT KIDS' HAT 48911



C
NAVY / OFF WHITE /
RASPBERRY

4-8 years | One size | Light knit | 100% skin soft merino wool | Zefir 20.5 micron
1-ply | 14 gauge | Machine wash using wool-cycle

NORWAY KIDS' HEADBAND 26791



C
NAVY / OFF WHITE /
RASPBERRY

4-8 years | One size | Light knit | 100% skin soft merino wool | Zefir 20.5 micron | Fully lined with extra-fine merino wool
1-ply | 14 gauge | Machine wash using wool-cycle

CORTINA KIDS' HAT 2-4 YEARS 43331



I
PINK CANDY /
OFF WHITE



E
LIGHT CHARCOAL /
OFF WHITE



D
BLUE SHADOW /
OFF WHITE



B
RASPBERRY /
OFF WHITE



H
ULTRAMARINE /
OFF WHITE



G
DARK GREEN /
OFF WHITE



C
NAVY /
OFF WHITE

2-4 years | One size | Regular knit | 100% skin soft merino wool | Zefir 20.5 micron | Fully lined with extra-fine merino wool
3-ply | 7 gauge | Machine wash using wool-cycle

CORTINA KIDS' HAT 4-8 YEARS 43341



I
PINK CANDY /
OFF WHITE



E
LIGHT CHARCOAL /
OFF WHITE



D
BLUE SHADOW /
OFF WHITE



B
RASPBERRY /
OFF WHITE



H
ULTRAMARINE /
OFF WHITE



G
DARK GREEN /
OFF WHITE



C
NAVY /
OFF WHITE

4-8 years | One size | Regular knit | 100% skin soft merino wool | Zefir 20.5 micron | Fully lined with extra-fine merino wool
3-ply | 7 gauge | Machine wash using wool-cycle



MEDIA BANK - DALE OF NORWAY

View and download our images and marketing material at:

<https://daleofnorway.box.com/v/daleofnorway2022>

Password: Dale2022



Dale
Concepts

OLYMPIA SPORT CONCEPT



women



Mid layer - Olympia sweater



Olympia headband

Next-to-skin - Olympia Basic sweater



Spirit unisex socks - knee high



Spirit unisex socks - crew cut



Outer layer - Veøy pile fleece jacket



Outer layer - Utvær windbreaker vest



Next-to-skin - Olympia leggings

OLYMPIA SPORT CONCEPT



men



Mid layer - Olympia sweater



Olympia hat

Next-to-skin - Olympia Basic sweater



Spirit unisex socks - knee high



Spirit unisex socks - crew cut



Outer layer - Vøøy pile fleece jacket & vest



Outer layer - Utvær windbreaker vest



Next-to-skin - Olympia pants

CORTINA SPORT CONCEPT



women



CORTINA SPORT CONCEPT



men



Mid layer - Dalestølen sweater



Dystingen hat



Next-to-skin - Olympia Basic sweater



Outer layer - Veøy pile fleece vest



Cortina Merino headband



Next-to-skin - Olympia pants



Cortina unisex socks - crew cut



Cortina unisex socks - knee high

SPIRIT CONCEPT



men/women



URBAN CONCEPT



women



Mid layer - Elis **women's** sweater



Mid layer - Valøy **women's** sweater



Alvøy **unisex** hat

Outer layer - Stord **women's** down parka



Mid layer - The original Setesdal **unisex** sweater



URBAN CONCEPT



women



Mid layer - Christiania jacket



Mid layer - Peace sweater



Alvøy unisex hat



Outer layer - Firda quilted jacket



Outer layer - Lindøy down jacket

URBAN CONCEPT

men



Mid layer - Måløy sweater

Mid layer - Valløy sweater



Måløy unisex hat



Outer layer - Stord men's down parka

Mid layer - The original Setesdal unisex sweater

CORTINA 1956 CONCEPT



women/men



Mid layer – Cortina 1956 **unisex** sweater



Cortina 1956 **unisex** hat



Cortina 1956 **unisex** headband



Mid layer – Vågsøy **women's** sweater



Mid layer – Vågsøy **men's** sweater



Cortina **unisex** socks – crew cut



Cortina **unisex** socks – knee high



Essentials



PROPERTIES OF WOOL

Due to its exceptional properties that no synthetic fibers can match, wool is back in fashion. Wool is nature's own "high-tech" fiber. It has great insulating abilities, it breathes and wicks moisture away from the body, is odor resistant – and it is a completely natural fiber!

Nature's own high-tech material

Despite the technological development of synthetic fibers, no man-made fibers can match the natural, high performance properties of wool. It has superior insulation and breathability, it regulates body temperature, absorbs and wicks moisture, it is warm even when wet or damp, is naturally odor resistant, elastic, non-static and maintains its shape – and best of all, it is a 100% natural and sustainable fiber.

The natural insulation fiber

Wool fibers are much finer than synthetics and other types of fibers. For a given weight, wool contains more air spaces which, in turn, means more insulation. That's why wool is better at keeping the cold out, and the warmth in. The natural crimp (waviness) of wool fibers creates millions of tiny air spaces. This superior insulation results in better thermal comfort. Other fibers, lacking wool's crimp, often require more bulk in order to provide the same insulation properties.

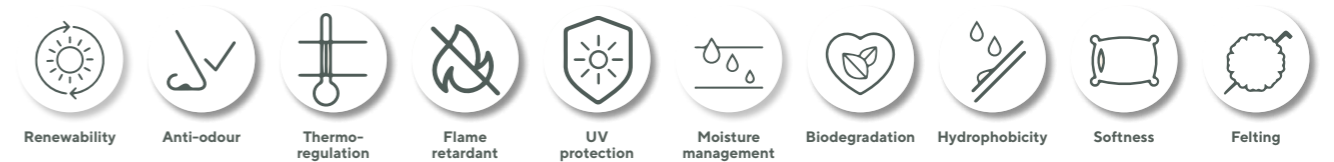
Superior wicking

Wool has a tremendous capacity to absorb vapor – up to 28% of its own weight before it feels damp or wet. Subsequently, it's able to absorb sweat away from the skin, move it through the wool layers, and then release it to the atmosphere. This offers a tremendous advantage over synthetic fabrics.

Naturally odor resistant

Odor is caused by bacteria. They prefer smooth surfaces with a positive charge, like synthetics, whereas the neutral scales of a wool fiber hold no attraction. This makes wool naturally odor resistant. Since it can refresh itself simply by hanging in fresh air, wool requires less washing, thus saving laundry detergent and energy. In addition, wool garments generally have a much longer lifespan than other garments. Better for you. Better for the environment.

P.S. Our production is powered by sustainable, hydro-electric energy generated by local waterfalls in the Dale valley.



OUR WOOL AND YARN

Our collections are designed with different types of wool adapted to each product. Over the past 140 years we have fine-tuned our production techniques, making garments with superior long-lasting qualities.

All of our yarns are combed, as opposed to brushed. This process removes short fibers and ensures a softer feel, little pilling (if any at all), and a crisp look. Our superior quality merino wool is animal-friendly, sourced from certified suppliers. Naturally, our merino wool is mulesing-free.



Harmony

Skin soft extra fine merino wool | 19.5 micron

Luxurious Italian spun merino wool, the softest merino there is. By exclusively using the finest yarn, combined with our unique knitting techniques, we have reduced pilling to a degree normally not experienced with such soft yarns. Machine wash using wool-cycle.

Heron

Fine Norwegian wool | 30.5 micron

Made from 100% fine Norwegian wool from the sheep's very first shearing. The fibres are short, giving us a finer and softer yarn. This very thin spun yarn offers a uniquely crisp look and longevity. Norwegian wool is one of the world's most eco- and animal-friendly textile fibers, due to the sheep's natural mountain life. Machine wash using wool-cycle.

Husky

Air-spun merino wool | 19.5 micron

With air-spun yarn every fiber end is blown into a core in the center of the yarn. This makes the yarn more durable than traditional soft yarns. Still, the garment is super soft and remarkably light. Hand wash.

Kyoto

Soft 50/50 baby alpaca and wool blend | 22.5 micron

A super soft and luxurious baby alpaca and wool blend for an exclusive, handknitted look. Alpaca wool adds lightness and silkiness to the blend, while keeping the sheep wool's great strength and warming qualities. This is a soft, warm blend with an extremely high wearing comfort, providing beautiful, sophisticated garments with an edge. Hand wash.

Leonora

Skinsoft extra fine merino wool | 19.5 micron

Soft as cashmere, spun from an extra-fine premium merino wool. By exclusively using the finest yarn, combined with our unique knitting techniques, we have reduced pilling to a degree normally not experienced with such soft yarns. Machine wash using wool-cycle.

Plover

Long-lasting Norwegian wool | 33.5 micron

A proprietary blend of wool produced in Norway from the "dalasau" (valley sheep). Norwegian wool is one of the world's most eco- and animal-friendly textile fibers, due to the sheep's natural mountain life. This yarn offers an authentic look renowned for its uniquely crisp look and longevity. Hand wash.

Progress

Merino wool / Tencel blend | 19.5 micron

Our merino wool/Tencel blend (60% extra fine merino wool, 40% super soft Tencel) provides sporty and wearable garments that are soft, absorbent, resistant to wrinkles and drape well. Tencel is an EU Ecolabel certified fabric made from sustainably managed forests of eucalyptus trees. Our garments made with merino wool/Tencel blend keep you cool in summer and warm in winter. Machine wash using wool-cycle.

Pure

Skinsoft superfine merino wool | 16.5 micron

Super fine merino wool is the perfect functional fiber. Extremely high wearing comfort, itch-free and with a soft feel. Very fine spun, this wool is ideal as a base layer for sport. Machine wash using wool-cycle.

Seagull

Lightweight wool | 27 micron

Our premium 100% colonial super wash yarn, produced exclusively for Dale of Norway, is perfect for traditional medium-weight garments requiring a lighter and softer feel. Machine wash using wool-cycle.

Zefir

Skin soft merino wool | 20.5 micron

Our super wash merino wool is one of the finest wool qualities available. Coming from merino sheep living in a warm climate, merino has very fine and long staple fibers, giving a very smooth next-to-skin comfort. Machine wash using wool-cycle.

Naturally, our wool is mulesing-free.

SIZE TABLE

This is an overview of how our sizes correspond to the sizes in different countries. We must emphasize that wool is an elastic material and as such, there may occur small variations from one model to another. For unisex sizes, please use body measurements to find your corresponding size in the masculine chart.

WOMEN'S SIZES

	XS	S	M	L	XL	XXL
EUR	32	34-36	38-40	42-44	46-48	50-52
FR	34	36-38	40-42	44-46	48-50	52-54
IT	38	40-42	44-46	48-50	52-54	56-58
GB	6	8-10	12-14	16-18	20-22	24-26
USA,CAN	2	4-6	8-10	12-14	16-18	20-22

BODY MEASUREMENTS IN CM

CHEST	82	88	94	100	106	116
WAIST	66	72	78	84	90	100
SEAT	90	96	102	108	114	124
INSEAM	77	78	79	80	81	82

MEN'S SIZES

	XS	S	M	L	XL	XXL	XXXL
EUR	40-42	44-46	48-50	52-54	56-58	60-62	64-66
GB	30-32	34-36	38-40	42-44	48-50	50-52	54-56
USA,CAN	30-32	34-36	38-40	42-44	48-50	50-52	54-56

BODY MEASUREMENTS IN CM

CHEST	88	94	100	106	112	118	124
WAIST	74	80	86	92	98	104	112
SEAT	90	96	102	108	114	120	128
INSEAM	81	82	83	84	85	86	87

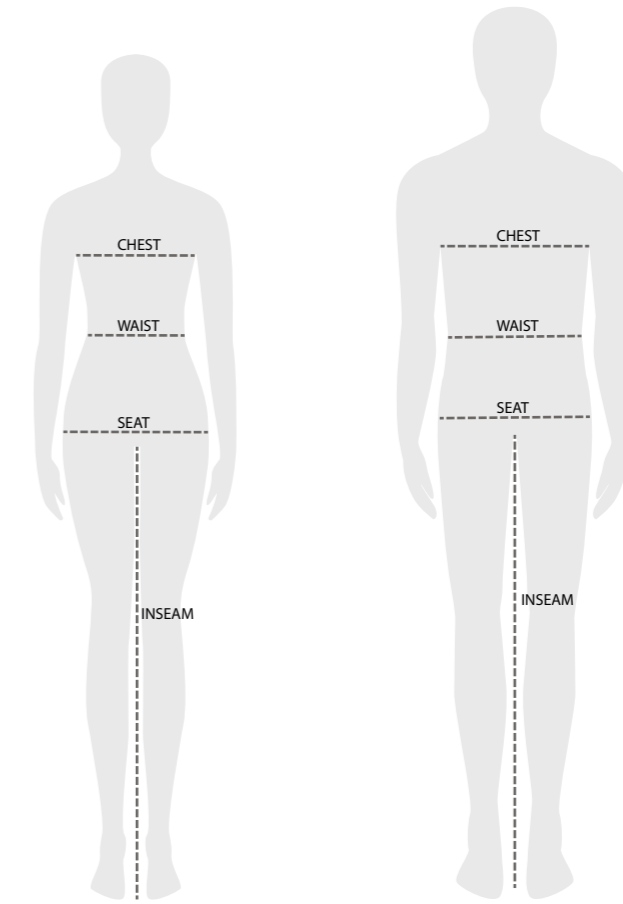
KIDS' MEASUREMENTS IN CM

	2 years	4 years	6 years	8 years	10 years	12 years
CHEST	54	58	62	66	72	78
WAIST	53	55	57	60	62	68
SEAT	58	62	66	70	75	81

HAT MEASUREMENTS IN CM

	HEAD CIRCUMFERENCE
SMALL - MEDIUM	56
UNISEX FIT	58

HOW TO MEASURE



Chest: Measure around the fullest part of the chest.

Waist: Measure around the narrowest part of the waistline.

Seat: Measure at the fullest part of the hips.

Inseam: Measure the length between just below the crotch and the bottom of the ankle.

SLEEVE INFO

We use different sleeve designs. The objective is to provide a garment that is both flattering and comfortable for the intended use. For example, a sweater that is designed for outdoor or skiing needs to provide easy movement while a garment for the indoors needs to be comfortable and look sophisticated.



RAGLAN SLEEVE

A sleeve inset that extends over the shoulder to the neckline; seams run in an angle from underarm to the neck, providing free movement for an active fit.



T - SLEEVE

A straight cut sleeve that drops the shoulder for a loose fit.



J - SLEEVE

A sleeve inset with a slimmer arm width and a fitted shoulder point, making the garment perfect for general use.



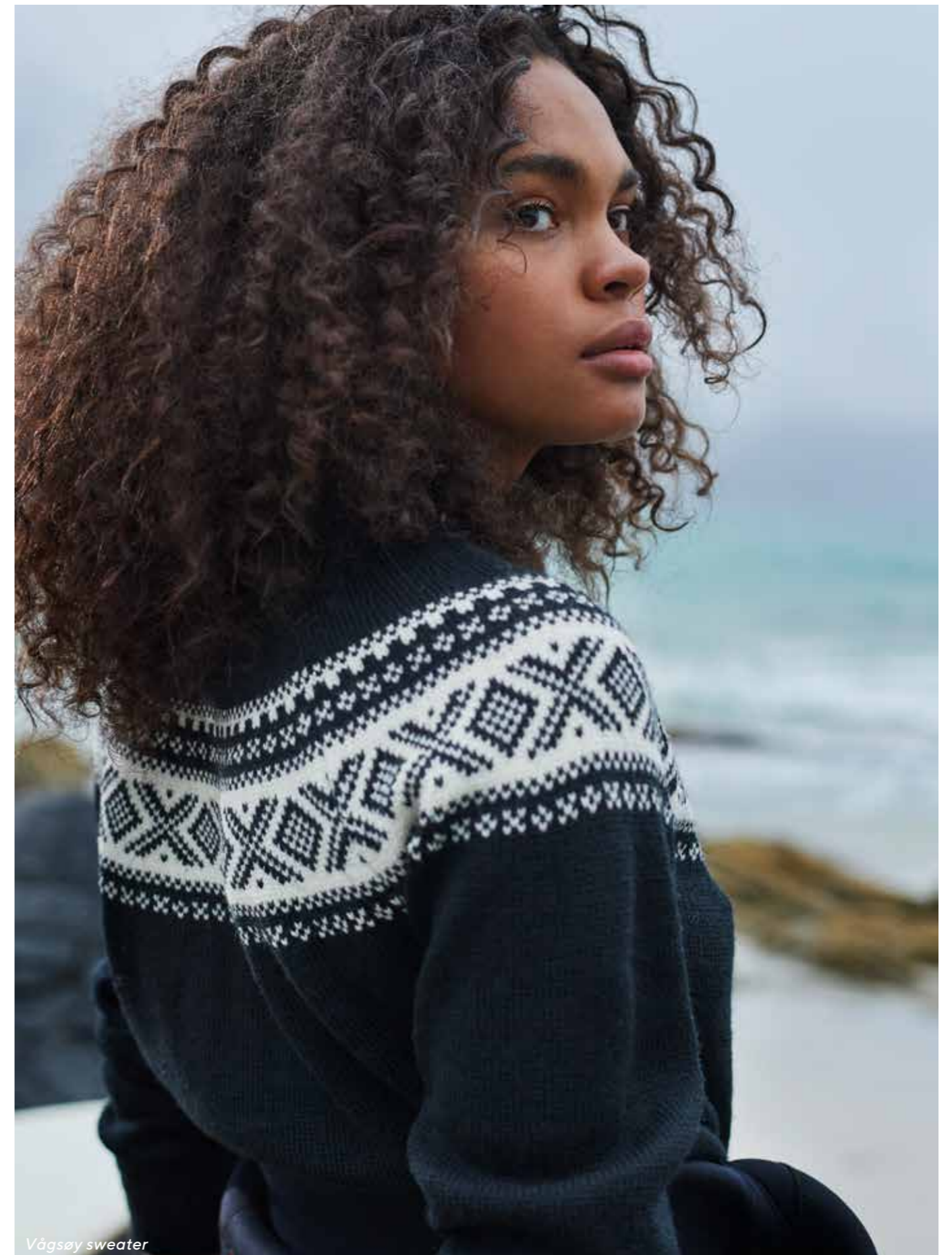
SADDLE SLEEVE

A variation of the Raglan sleeve in which the shoulder portion forms a straight band to the neck, removing the seam across the shoulder.



FRENCH SHOULDER

Like the J-sleeve with a fashioned shoulder seam, which drops away on the back of the garment. This design makes the seams almost invisible.





Vilja & Vegards sweaters

CONTACT INFO

HQ | NORWAY
DALE OF NORWAY AS
 N-5721 DALEKVAM
 NORWAY
 TEL: +47 56 59 54 00
 CUSTOMER SERVICE: +47 56 59 55 15
 E-MAIL: CUSTOMERSERVICE@DALE.NO

USA/CANADA
DALE OF NORWAY INC
 1413 CENTER DRIVE
 PARK CITY, UT 84098
 TEL: +1-435-252-3300
 FAX: +1-435-252-3303

AUSTRIA & GERMANY
AGENTUR WINTERFELD
 SEESTRASSE 33
 9583 FAAK AM SEE
 AUSTRIA
INGO VON WINTERFELD:
 TEL: +43 677 61373951
 MAIL: OFFICE@VONWINTERFELD.AT
 WEB: VONWINTERFELD.AT

BELGIUM
SNOWFORCE BVBA
 NIJVERHEIDSSTRAAT 40
 2570 DUFFEL, BELGIUM
ELLY DE PRETER:
 TEL: +32 495 24 36 30
 MAIL: ELLY@SNOWFORCE.BE

CZECH REPUBLIC & SLOVAKIA
NORTH TRAPPERS S.R.O
 JAROŠOVA 32,
 412 01 LITOMĚŘICE, CZECH REPUBLIC
TOMAS UGLAJ (COUNTRY MANAGER):
 TEL: + 420 416 738 846
 MAIL: INFO@NORSKAMODA.CZ

DENMARK
KAREN KROGH CHRISTENSEN
 ØSTERGADE 103
 9440 AABYBRO
 DANMARK
 TEL: +4540604010
 MAIL: KAREN@DALEOFNORWAY.COM

FINLAND
ACTIVE MARINE & OUTDOOR AB
 KIRVESMIEHENKATU 10A
 00880 HELSINKI, FINLAND
HEIKKI HAVUSELA (CEO):
 TEL: +358 50 56 71 343
 MAIL: HEIKKI@MARINOUTDOOR.COM
NINA VILJANEN (SALES):
 TEL: +358 50 53 03 868
 MAIL: NINA@MARINOUTDOOR.COM

FRANCE
AGENCE COMMERCIALE -
SARL STREET TO SUMMIT
 SIÈGE SOCIAL
 4 RUE DES POMMARIES
 74940 ANNECY-LE-VIEUX
BASTIEN GAUBERT:
 TEL: +337 86 10 05 09)
 MAIL: BASTIEN.GAUBERT@GMAIL.COM
ANTOINE GAUBERT:
 TEL: +336 86 17 18 99
 MAIL: ANTOINE.GAUBERT@GMAIL.COM

SHOWROOM (2021/2022)
 15 AVENUE DU PRÉ-FÉLIN
 PARC DES GLAISINS
 74940 ANNECY-LE-VIEUX

ITALY
DIADEMA DISTRIBUTION
 VIA DELLA RESISTENZA, 121/3
 20090 BUCCINASCO (MI), ITALY
 CELL: +39 339 89 17 626
 MAIL: INFO@DIADEMADISTRIBUTION.IT

THE NETHERLANDS
SNOWGOOSE
 DE KWERKERIJ 5
 1921XZ AKERSLOOT,
 THE NETHERLANDS
MARCEL KOOMEN:
 TEL: +31 613 809 405
 MAIL: INFO@SNOWGOOSE.NL
 MAIL: MARCEL@SNOWGOOSE.NL

SPAIN
ALPINE CLASSICS
 IRUÑA 1 BIS PLANTA 4A, DEPARTAMENTO 6
 48014 BILBAO, SPAIN
IÑIGO GONZÁLEZ-DUEÑAS:
 TEL: +34 619 46 55 46
 MAIL: INIGO@ALPINECLASSICS.ES

SWEDEN & GREENLAND
NEW ELEMENT SCANDINAVIA AB
 NÄSBY 52, TEGELSTALLET 1C
 155 93 NYKVARN
OLA GRÄSBERG (CEO):
 TEL: +46 (0)70 304 55 33
 MAIL: OLA@NEWELEMENT.SE
ULF WALDEKRANTZ:
 TEL: +46 (0)70 584 14 63
 MAIL: ULF@NEWELEMENT.SE
 OFFICE: +46(0)8-552 45 900

SWITZERLAND
LENZINGER GMBH
 SCHULHAUSTRASSE
 CH-8340 HINWIL,
ROLF LENZINGER (CEO):
 TEL: +41 43 843 23 23
 CELL +41 79 421 01 44
 MAIL: ROLF@LENZINGER.CH
MIRIAM OTT (SALES):
 TEL: +41 43 843 23 23
 CELL: +41 79 668 48 91
 MAIL: M.OTT@LENZINGER.CH

PRODUCT LIST - NUMERIC

9150	MORITZ KIDS' SWEATER	95	49041	MOUNT OLYMPUS HAT	100	83821	SPIRIT WOMEN'S JACKET	28	94831	HISTORY BASIC MEN'S SWEATER	37
1			49051	OLYMPIA HAT	100	83831	SPIRIT MEN'S JACKET	42	94841	VESKRE WP WOMEN'S SWEATER	32
10981	HARALD SCARF	114	49061	TEAM NORWAY HAT	101	83881	VILJA WOMEN'S JACKET	56	94851	VESKRE WP MEN'S SWEATER	46
11691	GARMISCH SCARF	114	49071	1879 HAT	101	83891	VEGARD MEN'S JACKET	66	94921	FALUN HERON WOMEN'S SWEATER	57
11701	CHRISTIANIA SCARF	115	49081	OLYMPIA KIDS'HAT	119	83921	MOUNT OLYMPUS WOMEN'S ZIP HOODIE	24	94931	HISTORY UNISEX SWEATER	42
11831	SPIRIT NECK	114	5			83931	MOUNT OLYMPUS MEN'S ZIP HOODIE	39	94971	ALVØY MEN'S SWEATER	68
13312	PEACE WOMEN'S SWEATER	77	50101	CORTINA SOCKS - CREW CUT	116	85181	OLYMPIA WOMEN'S JACKET	24	94981	VILJA WOMEN'S SWEATER	56
2			50111	CORTINA SOCKS - KNEE HIGH	117	85191	OLYMPIA MEN'S JACKET	39	94991	VEGARD MEN'S SWEATER	66
25014	CORTINA 1956 HEADBAND	112	50121	SPIRIT SOCKS - CREW CUT	116	85301	FIRDA WOMEN'S QUILTED JACKET	59	95001	STARGAZE BASIC WOMEN'S SWEATER	21
25031	MORITZ MITTENS	99	50131	SPIRIT SOCKS - KNEE HIGH	117	85311	ALVØY MEN'S QUILTED JACKET	71	95021	BLYFJELL MEN'S SWEATER	88
25041	VILJA MITTENS	99	50141	HISTORY SOCKS - CREW CUT	116	9			95031	LAHTI MEN'S SWEATER	41
25051	FALUN MITTENS	99	50151	HISTORY SOCKS - KNEE HIGH	117	90331	VAIL MEN'S SWEATER	88	95041	GEILO MEN'S SWEATER	41
25971	GARMISCH HEADBAND	111	55021	UTVÆR WINDBREAKER WOMEN'S VEST	31	91391	MORITZ MEN'S SWEATER	41	95081	ELIS WOMEN'S SWEATER	52
26021	CORTINA MERINO HEADBAND	112	55031	UTVÆR WINDBREAKER MEN'S VEST	45	91461	MORITZ WOMEN'S SWEATER	27	95091	ELIS MEN'S SWEATER	63
26091	MORITZ HEADBAND	111	55041	VEØY PILE FLEECE WOMEN'S JACKET	31	91461	MORITZ WOMEN'S SWEATER	27	95101	MOUNT BLÅTIND WOMEN'S SWEATER	23
26701	CHRISTIANIA HEADBAND	113	55051	VEØY PILE FLEECE MEN'S JACKET	45	9150	MORITZ KIDS' SWEATER	95	95111	MOUNT BLÅTIND MEN'S SWEATER	40
26771	SPIRIT HEADBAND	110	55061	VEØY PILE FLEECE WOMEN'S VEST	31	92521	CORTINA 1956 UNISEX SWEATER	83	95141	MOUNT ROSSNOS WOMEN'S SWEATER	23
26781	NORWAY HEADBAND	111	55071	VEØY PILE FLEECE MEN'S VEST	45	92681	MORITZ BASIC WOMEN'S SWEATER	20	95181	OLYMPIA WOMEN'S SWEATER	24
26791	NORWAY KIDS HEADBAND	121	55081	STORD WOMEN'S DOWN PARKA	60	92691	MORITZ BASIC MEN'S SWEATER	37	95191	OLYMPIA MEN'S SWEATER	39
26801	DYSTINGEN HEADBAND	110	55091	STORD MEN'S DOWN PARKA	71	92991	CORTINA KIDS' SWEATER	95	95221	VILJA WP WOMEN'S HOODIE	59
26811	OLYMPIA HEADBAND	110	55101	LINDØY DOWN WOMEN'S JACKET	60	93011	MYKING WOMEN'S SWEATER	57	95231	VEGARD WP MEN'S HOODIE	71
4			55121	SEDJE DOWN WOMEN'S JACKET	59	93031	SVERRE MEN'S SWEATER	86	95251	VAIL WP MEN'S HOODIE	46
40331	VAIL HAT	106	6			93141	MYKING MEN'S SWEATER	68	95261	VALLØY WOMEN'S SWEATER	53
42261	CORTINA 1956 HAT	105	62011	SPIRIT BASIC WOMEN'S LEGGINGS	20	93441	HOVDEN MEN'S SWEATER	86	95271	VALLØY MEN'S SWEATER	63
43331	CORTINA KIDS HAT 2-4	120	62051	SPIRIT MEN'S PANTS	36	93521	CORTINA BASIC WOMEN'S SWEATER	21	95281	WINTERLAND WOMEN'S SWEATER	75
43341	CORTINA KIDS HAT 4-8	121	62071	HISTORY MEN'S PANTS	37	93531	CORTINA BASIC MEN'S SWEATER	36	95291	WINTERLAND MEN'S SWEATER	85
47971	GARMISCH HAT	104	62081	STARGAZE BASIC WOMEN'S LEGGINGS	21	93781	SETESDAL UNISEX SWEATER	83	95301	WINTERLAND KIDS' SWEATER	94
48001	MYKING HAT	107	62121	OLYMPIA BASIC WOMEN'S LEGGINGS	19	93951	140TH ANNIVERSARY MEN'S SWEATER	88	95321	WINTER STAR WOMEN'S SWEATER	75
48061	HARALD HAT	107	62131	OLYMPIA MEN'S PANTS	35	93961	FONGEN WP WOMEN'S SWEATER	81	95331	WINTER STAR MEN'S SWEATER	85
48081	HOVDEN HAT	104	65100	GEILO DRESS	27	93971	FONGEN WP MEN'S SWEATER	91	95341	KARMØY WOMEN'S SWEATER	52
48211	CORTINA MERINO HAT	105	65120	SVANØY DRESS	53	93981	VAIL WP MEN'S SWEATER	91	95361	ASPØY WOMEN'S SWEATER	52
48321	VILDE HAT	107	7			94041	FALUN WOMEN'S SWEATER	57	95381	VÅGSØY WOMEN'S SWEATER	55
48361	MORITZ HAT	104	75021	SØRØY WOMEN'S SHACKET	55	94401	BJORØY WOMEN'S SWEATER	56	95391	VÅGSØY MEN'S SWEATER	65
48701	CHRISTIANIA HAT	108	75031	SØRØY MEN'S SHACKET	65	94411	TYSSØY MEN'S SWEATER	68	95401	HANANIPA BASIC WOMEN'S SWEATER	19
48891	SPIRIT HAT	106	8			94521	ISFRID WOMEN'S SWEATER	23	95411	HANANIPA BASIC MEN'S SWEATER	35
48901	NORWAY HAT	106	81951	CHRISTIANIA WOMEN'S JACKET	76	94541	FIRDA WOMEN'S SWEATER	26	95441	KVALØY WOMEN'S SWEATER	55
48911	SPIRIT KIDS HAT	120	82311	GEILO WOMEN'S SWEATER	27	94621	MOUNT ASHCROFT WOMEN'S SWEATER	26	95451	KVALØY MEN'S SWEATER	64
48921	CORTINA HERON HAT	105	83191	HOVDEN MEN'S JACKET	86	94631	MOUNT ASHCROFT MEN'S SWEATER	40	95461	SVANØY WOMEN'S SWEATER	53
48931	ALVØY HAT	103	83291	SETESDAL UNISEX JACKET	83	94641	MOUNT RED WOMEN'S SWEATER	26	95471	ASPØY MEN'S SWEATER	63
48941	VILJA HAT	102	83341	SOLFRID WOMEN'S JACKET	77	94671	SIGURD MEN'S SWEATER	87	95491	BJØRNØY MEN'S SWEATER	64
48961	MÅLØY HAT	103	83481	140TH ANNIVERSARY WOMEN'S JACKET	75	94691	VEGVISIR MEN'S SWEATER	87	95511	MÅLØY MEN'S SWEATER	64
48971	BJORØY HAT	101	83521	INGEBORG WOMEN'S JACKET	76	94711	HODUR MEN'S SWEATER	87	95561	OLYMPIA KIDS' SWEATER	94
48981	DYSTINGEN HAT	100	83761	BRIMSE WOMEN'S JACKET	78	94721	HOVEN WOMEN'S SWEATER	28	95581	OLYMPIA BASIC WOMEN'S SWEATER	19
48991	WINTER STAR HAT	102	83781	KVITSEID WOMEN'S JACKET	78	94731	HOVEN MEN'S SWEATER	43	95591	OLYMPIA BASIC MEN'S SWEATER	35
49011	WINTERLAND HAT	102	83801	KVINESDAL WOMEN'S JACKET	78	94761	OL SPIRIT WOMEN'S SWEATER	28	95601	DALESTØLEN WOMEN'S SWEATER	25
49021	WINTERLAND KIDS'HAT	119				94771	OL SPIRIT MEN'S SWEATER	42	95611	DALESTØLEN MEN'S SWEATER	40
						94781	OL SPIRIT KIDS' SWEATER	94	95621	DYSTINGEN WOMEN'S SWEATER	25
						94801	SPIRIT BASIC WOMEN'S SWEATER	20			
						94811	SPIRIT BASIC MEN'S SWEATER	36			

PRODUCT LIST - ALPHABETICAL

1			FONGEN WP MEN'S SWEATER	93971	91	MOUNT BLÅTIND WOMEN'S SWEATER	95101	23	STARGAZE BASIC WOMEN'S LEGGINGS	62081	21
140TH ANNIVERSARY MEN'S SWEATER	93951	88	FONGEN WP WOMEN'S SWEATER	93961	81	MOUNT OLYMPUS HAT	49041	100	STARGAZE BASIC WOMEN'S SWEATER	95001	21
140TH ANNIVERSARY WOMEN'S JACKET	83481	75	G			MOUNT OLYMPUS MEN'S ZIP HOODIE	83931	39	STORD MEN'S DOWN PARKA	55091	71
1879 HAT	49071	101	GARMISCH HAT	47971	104	MOUNT OLYMPUS WOMEN'S ZIP HOODIE	83921	24	STORD WOMEN'S DOWN PARKA	55081	60
A			GARMISCH HEADBAND	25971	111	MOUNT RED WOMEN'S SWEATER	94641	26	SVANØY DRESS	65120	53
ALVØY HAT	48931	103	GARMISCH SCARF	11691	114	MOUNT ROSSNOS WOMEN'S SWEATER	95141	23	SVANØY WOMEN'S SWEATER	95461	53
ALVØY MEN'S SWEATER	94971	68	GEILO DRESS	65100	27	MYKING HAT	48001	107	SVERRE MEN'S SWEATER	93031	86
ALVØY MEN'S QUILTED JACKET	85311	71	GEILO MEN'S SWEATER	95041	41	MYKING MEN'S SWEATER	93141	68	SØRØY WOMEN'S SHACKET	75021	55
ASPØY MEN'S SWEATER	95471	63	GEILO WOMEN'S SWEATER	82311	27	MYKING WOMEN'S SWEATER	93011	57	SØRØY MEN'S SHACKET	75031	65
ASPØY WOMEN'S SWEATER	95361	52	H			MÅLØY HAT	48961	103	T		
B			HANANIPA BASIC MEN'S SWEATER	95411	35	MÅLØY MEN'S SWEATER	95511	64	TEAM NORWAY HAT	49061	101
BJORØY HAT	48971	101	HANANIPA BASIC WOMEN'S SWEATER	95401	19	N			TYSSØY MEN'S SWEATER	94411	68
BJORØY WOMEN'S SWEATER	94401	56	HARALD HAT	48061	107	NORWAY HAT	48901	106	U		
BJØRNØY MEN'S SWEATER	95491	64	HARALD SCARF	10981	114	NORWAY HEADBAND	26781	111	UTVÆR WINDBREAKER MEN'S VEST	55031	45
BLYFJELL MEN'S SWEATER	95021	88	HISTORY BASIC MEN'S SWEATER	94831	37	NORWAY KIDS HEADBAND	26791	121	UTVÆR WINDBREAKER WOMEN'S VEST	55021	31
BRIMSE WOMEN'S JACKET	83761	78	HISTORY MEN'S PANTS	62071	37	O			V		
C			HISTORY SOCKS - CREW CUT	50141	116	OL SPIRIT KIDS' SWEATER	94781	94	VAIL HAT	40331	106
CHRISTIANIA HAT	48701	108	HISTORY SOCKS - KNEE HIGH	50151	117	OL SPIRIT MEN'S SWEATER	94771	42	VAIL MEN'S SWEATER	90331	88
CHRISTIANIA HEADBAND	26701	113	HISTORY UNISEX SWEATER	94931	42	OL SPIRIT WOMEN'S SWEATER	94761	28	VAIL WP MEN'S HOODIE	95251	46
CHRISTIANIA SCARF	11701	115	HODUR MEN'S SWEATER	94711	87	OLYMPIA BASIC MEN'S SWEATER	95591	35	VAIL WP MEN'S SWEATER	93981	91
CHRISTIANIA WOMEN'S JACKET	81951	76	HOVDEN HAT	48081	104	OLYMPIA BASIC WOMEN'S LEGGINGS	62121	19	VAIL WP MEN'S SWEATER	93981	91
CORTINA 1956 HAT	42261	105	HOVDEN MEN'S JACKET	83191	86	OLYMPIA BASIC WOMEN'S SWEATER	95581	19	VALLØY MEN'S SWEATER	95271	63
CORTINA 1956 HEADBAND	25014	112	HOVDEN MEN'S SWEATER	93441	86	OLYMPIA HAT	49051	100	VALLØY WOMEN'S SWEATER	95261	53
CORTINA 1956 UNISEX SWEATER	92521	83	HOVEN MEN'S SWEATER	94731	43	OLYMPIA HEADBAND	26811	110	VEGARD MEN'S JACKET	83891	66
CORTINA BASIC MEN'S SWEATER	93531	36	HOVEN WOMEN'S SWEATER	94721	28	OLYMPIA KIDS'HAT	49081	119	VEGARD MEN'S SWEATER	94991	66
CORTINA BASIC WOMEN'S SWEATER	93521	21	I			OLYMPIA KIDS' SWEATER	95561	94	VEGARD WP MEN'S HOODIE	95231	71
CORTINA HERON HAT	48921	105	INGEBORG WOMEN'S JACKET	83521	76	OLYMPIA MEN'S JACKET	85191	39	VEGVISIR MEN'S SWEATER	94691	87
CORTINA KIDS HAT 2-4	43331	120	ISFRID WOMEN'S SWEATER	94521	23	OLYMPIA MEN'S PANTS	62131	35	VESKRE WP MEN'S SWEATER	94851	46
CORTINA KIDS HAT 4-8	43341	121	K			OLYMPIA MEN'S SWEATER	95191	39	VESKRE WP WOMEN'S SWEATER	94841	32
CORTINA KIDS' SWEATER	92991	95	KARMØY WOMEN'S SWEATER	95341	52	OLYMPIA WOMEN'S JACKET	85181	24	VEØY PILE FLEECE MEN'S JACKET	55051	45
CORTINA MERINO HAT	48211	105	KVALØY MEN'S SWEATER	95451	64	OLYMPIA WOMEN'S SWEATER	95181	24	VEØY PILE FLECCE MEN'S VEST	55071	45
CORTINA MERINO HEADBAND	26021	112	KVALØY WOMEN'S SWEATER	95441	55	P			VEØY PILE FLEECE WOMEN'S JACKET	55041	31
CORTINA SOCKS - CREW CUT	50101	116	KVINESDAL WOMEN'S JACKET	83801	78	PEACE WOMEN'S SWEATER	13312	77	VEØY PILE FLEECE WOMEN'S VEST	55061	31
CORTINA SOCKS - KNEE HIGH	50111	117	KVITSEID WOMEN'S JACKET	83781	78	S			VILDE HAT	48321	107
D			L			SEDJE DOWN WOMEN'S JACKET	55121	59	VILJA HAT	48941	102
DALESTØLEN MEN'S SWEATER	95611	40	LAHTI MEN'S SWEATER	95031	41	SETESDAL UNISEX JACKET	83291	83	VILJA MITTENS	25041	99
DALESTØLEN WOMEN'S SWEATER	95601	25	LINDØY DOWN WOMEN'S JACKET	55101	60	SETESDAL UNISEX SWEATER	93781	83	VILJA WOMEN'S JACKET	83881	56
DYSTINGEN HAT	48981	100	M			SIGURD MEN'S SWEATER	94671	87	VILJA WOMEN'S SWEATER	94981	56
DYSTINGEN HEADBAND	26801	110	MORITZ BASIC MEN'S SWEATER	92691	37	SOLFRID WOMEN'S JACKET	83341	77	VILJA WP WOMEN'S HOODIE	95221	59
DYSTINGEN WOMEN'S SWEATER	95621	25	MORITZ BASIC WOMEN'S SWEATER	92681	20	SPIRIT BASIC MEN'S SWEATER	94811	36	VÅGSØY MEN'S SWEATER	95391	65
E			MORITZ HAT	48361	104	SPIRIT BASIC WOMEN'S LEGGINGS	62011	20	VÅGSØY WOMEN'S SWEATER	95381	55
ELIS MEN'S SWEATER	95091	63	MORITZ HEADBAND	26091	111	SPIRIT BASIC WOMEN'S SWEATER	94801	20	W		
ELIS WOMEN'S SWEATER	95081	52	MORITZ KIDS' SWEATER	9150	95	SPIRIT HAT	48891	106	WINTERLAND HAT	49011	102
F			MORITZ MEN'S SWEATER	91391	41	SPIRIT HEADBAND	26771	110	WINTERLAND KIDS'HAT	49021	119
FALUN HERON WOMEN'S SWEATER	94921	57	MORITZ MITTENS	25031	99	SPIRIT KIDS HAT	48911	120	WINTERLAND KIDS' SWEATER	95301	94
FALUN MITTENS	25051	99	MORITZ WOMEN'S SWEATER	91461	27	SPIRIT MEN'S JACKET	83831	42	WINTERLAND MEN'S SWEATER	95291	85
FALUN WOMEN'S SWEATER	94041	57	MOUNT ASHCROFT MEN'S SWEATER	94631	40	SPIRIT MEN'S PANTS	62051	36	WINTERLAND WOMEN'S SWEATER	95281	75
FIRDA WOMEN'S SWEATER	94541	26	MOUNT ASHCROFT WOMEN'S SWEATER	94621	26	SPIRIT NECK	11831	114	WINTER STAR HAT	48991	102
FIRDA WOMEN'S QUILTED JACKET	85301	59	MOUNT BLÅTIND MEN'S SWEATER	95111	40	SPIRIT SOCKS - CREW CUT	50121	116	WINTER STAR MEN'S SWEATER	95331	85
						SPIRIT SOCKS - KNEE HIGH	50131	117	WINTER STAR WOMEN'S SWEATER	95321	75
						SPIRIT WOMEN'S JACKET	83821	28			



Made in Norway since 1879